



164A Beecroft Road Cheltenham, NSW 5 2 2

Single level modernist masterpiece on 1,100sqm of land

For inspections, please park on Mason Ave or Cheltenham Rd

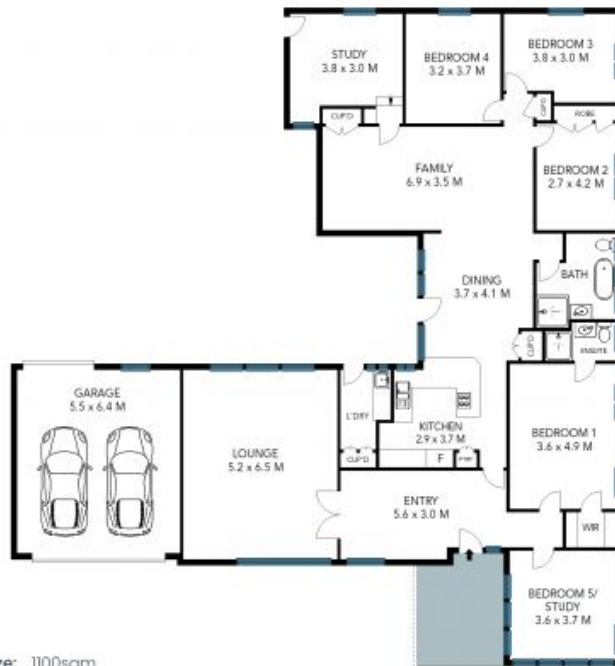
Price: Auction this Saturday 2:45pm
Council Rates: \$573.00 p/q
Water Rates: \$158.00 p/q



Kevin Dearlove

0403 338 302

164a Beecroft Road,
Cheltenham



Land Size: 1100sqm
Internal Size: 248sqm

The site plan and floor plan are not to scale; measurements are indicative and in metres. Bushes and trees are placed for illustration purposes. Plans should not be relied on. Interested parties should make and rely on their own enquiries. All other information provided has been collected from reliable sources but cannot be guaranteed for accuracy.