



1/1-3 Gordon Avenue Ingleburn, NSW

2 1 1

### Perfect Blend of Comfort and Convenience

Now this is the home you're looking for! Ideal for those looking to get in the market, invest, or just want to downsize. With a combination of comfort and convenience, this home is sure to impress.

**Price:** \$510,000 - \$560,000

**Council Rates:** \$302.90 p/q

**Strata Rates:** \$680.00 p/q



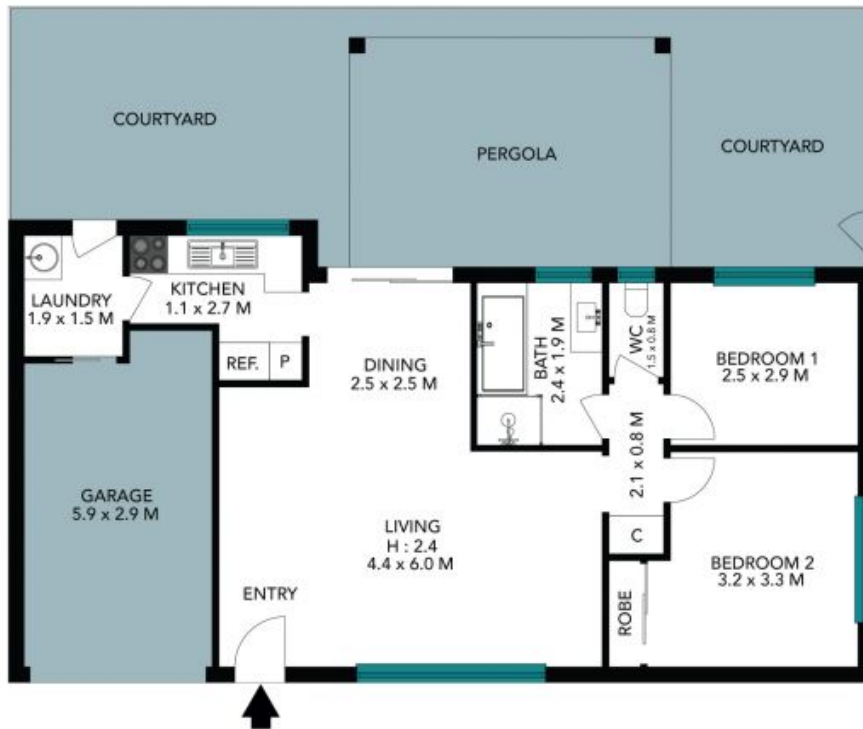
**Andrew Diadyk**

0422 164 657



**Andrew Diadyk**

0422 164 657



The floor plan is not to scale; measurements are indicative and in metres. Certain elements are not in position. Plans should not be relied on. Interested parties should make and rely on their own enquiries. All other information provided has been collected from reliable sources but cannot be guaranteed for accuracy.

1/1-3 Gordon Avenue  
Ingleburn

STONE



The floor plan is not to scale; measurements are indicative and in metres. All features included in this 3D plan are for inspiration purposes only. This is not an exact replica of the property or the position of exterior elements. Plans should not be relied on. Interested parties should make and rely on their own enquiries.