



2/38 The Esplanade Ettalong Beach, NSW

3 2 1

Luxury Beachfront Living at its Finest!

Introducing an exquisite rental opportunity nestled in an exclusive beachfront location, where the tranquil ocean and pristine sands merge effortlessly. This top floor high-end apartment offers the epitome of sophistication, boasting top-of-the-line finishes and an unrivaled coastal lifestyle that dreams are made of.

As you step foot into this breathtaking residence, you'll immediately be captivated by the opulence that surrounds you. The meticulously designed layout features three generously sized bedrooms, providing ample space for relaxation and rejuvenation. Wake up each morning to panoramic views of Palm Beach and the majestic Lion Island right from the comfort of your own bed.

...
...
...

To APPLY enter this address into your browser: t-app.com.au/stoneerinaettalong...

Price: \$1,100 p/week

Bond: \$4,400

Available Date: 20/07/2023



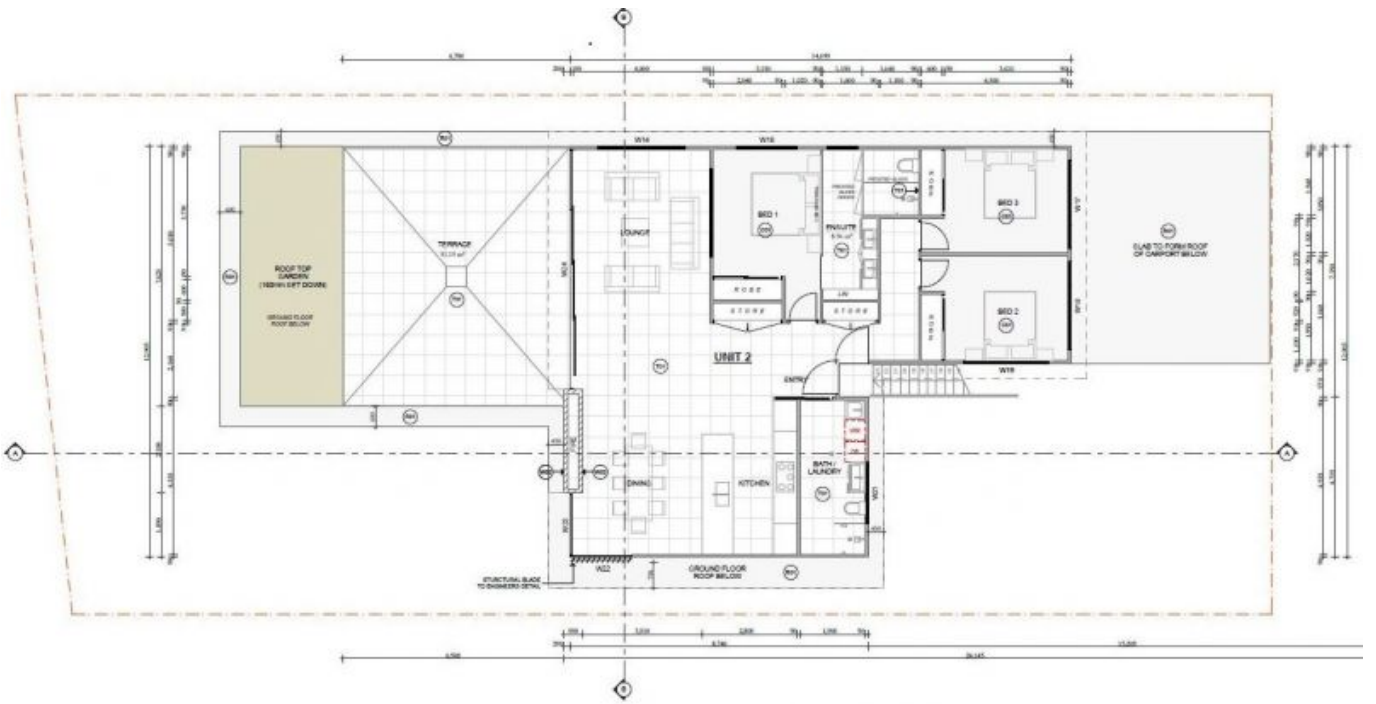
Christel Renton

0417 208 314



Helen Hughes

0418 220 622



- To Be Deleted
- Approval / Unchanged



UNIT 1 PRIVATE OPEN SPACE: 51.15 m² (APPROXIMATE FROM RELEVANT APPROVALS)
 UNIT 1 SECURE PRIVATE STORAGE: 10.48 m² (APPROXIMATE FROM RELEVANT APPROVALS)