



27/47 Stowe Avenue Campbelltown, NSW



Bring on the sunshine

- > Lovely sunny fifth floor apartment with a nice sized balcony
- > North Easterly position with views over the University towards Mount Annan Botanical Gardens
- > Combined living and dining area with floor to ceiling glazing and split system air conditioning
- > Main bedroom has an ensuite and access to the balcony
- > Painted in a muted colour palette and with hybrid flooring throughout
- > Large galley kitchen boasts 'BOSCH' appliances including dishwasher, gas cook top and Caesarstone benches
- > This apartment will suit owner occupiers or downsizing from a larger home
- > Security parking with caged storage and lift access is provided along with a communal roof terrace that can be utilised all year round
- > Opposite Western Sydney University and located just 500m from Macarthur Square's cinema, restaurant precinct, this is arguably one of the best locations in Macarthur region
- > Very unique in size, be the first to inspect this highly desirable apartment!!

Price: Contact Agent
Council Rates: \$285.00 p/q
Strata Rates: \$1,286.95 p/q



Russell Wyer

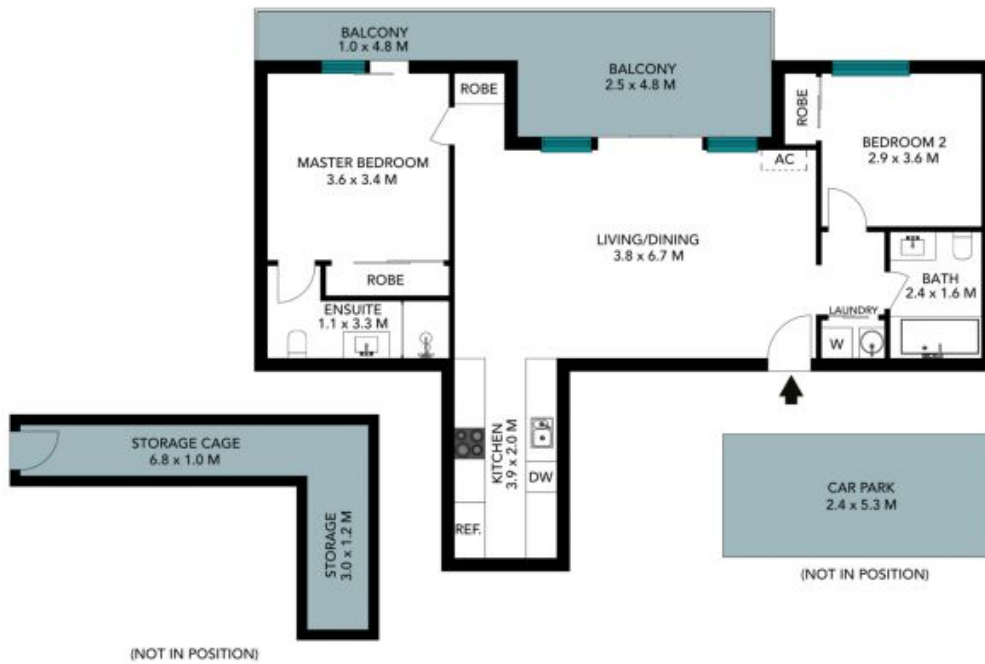
0414 867 707



Michelle Balabka

0419 473 253

27/47 Stowe Avenue
Campbelltown



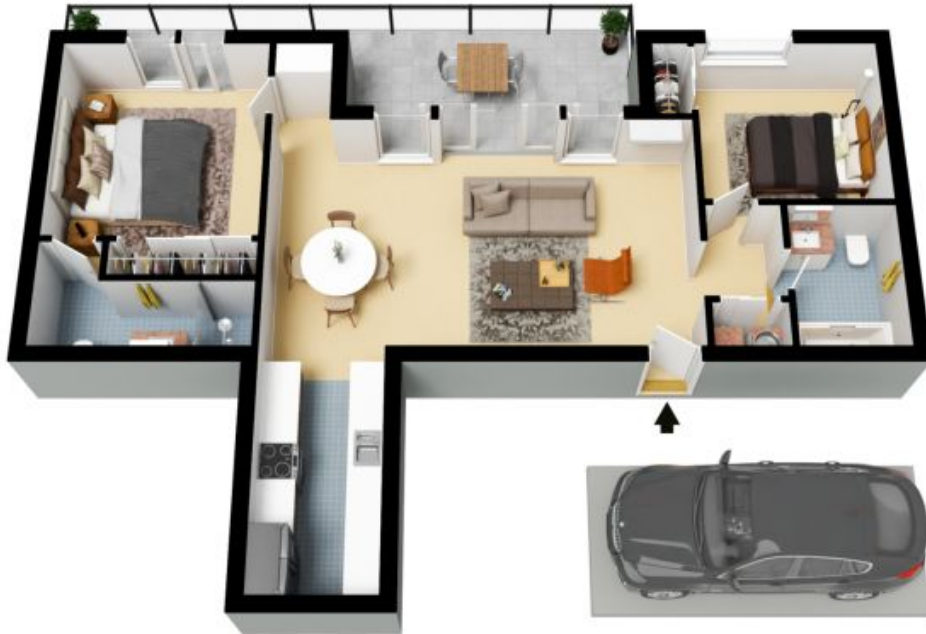
(NOT IN POSITION)

(NOT IN POSITION)



The floor plan is not to scale, measurements are indicative and in meters. Exterior elements are not in position. Plans should not be relied on, interested parties should make and rely on their own enquiries. All other information provided has been collected from reliable sources but cannot be guaranteed for accuracy.

27/47 Stowe Avenue
Campbelltown



The floor plan is not to scale; measurements are indicative and in metres. All features included in this 3D plan are for inspiration purposes only. This is not an exact replica of the property or the position of exterior elements. Plans should not be relied on. Interested parties should make and rely on their own enquiries.