



224 Settlers Road Lower Macdonald, NSW 4 2 2

### Spacious 4 Bedroom Home

Located in Lower Macdonald, close to Wisemans Ferry, this home offers a spacious layout in a peaceful setting with lovely rural views.

Spanning across two levels the tidy property is located just minutes from the 24/7 vehicle crossing at Wisemans Ferry with school buses servicing the area for both Primary & High School.

- 4 large bedrooms (2 upstairs, 2 downstairs)
- Bathrooms on each level with laundry facilities
- Living zones on both levels of the home
- Slow combustion fire place & air-conditioning
- Landscaped gardens

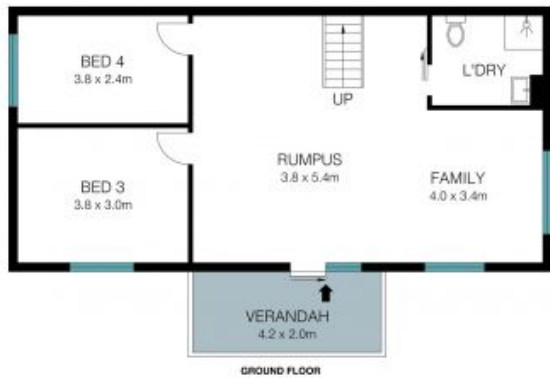
**Price:** \$500 PW  
**Available Date:** 28/07/2023



**Amanda Coles**  
 0418 484 960



**Sally Thomson**  
 0437 454 942



INTERNAL AREA : 145 SQM

The floor plan is not to scale, measurements are indicative and in metres. Other elements are not in position. Plans should not be relied on. Interested parties should make and rely on their own enquiries.



**224 Settlers Road, Lower McDonald**

