

2/207 Waterloo Road Marsfield, NSW



Superb location and convenience

Superbly situated within an idyllic garden setting, this elevated and thoughtful laid out apartment offers an unparalleled opportunity to embrace a refined and low-maintenance lifestyle. Crafted from solid brick construction, the residence boasts generously proportioned interiors, exuding an abundance of natural light and contemporary sophistication.



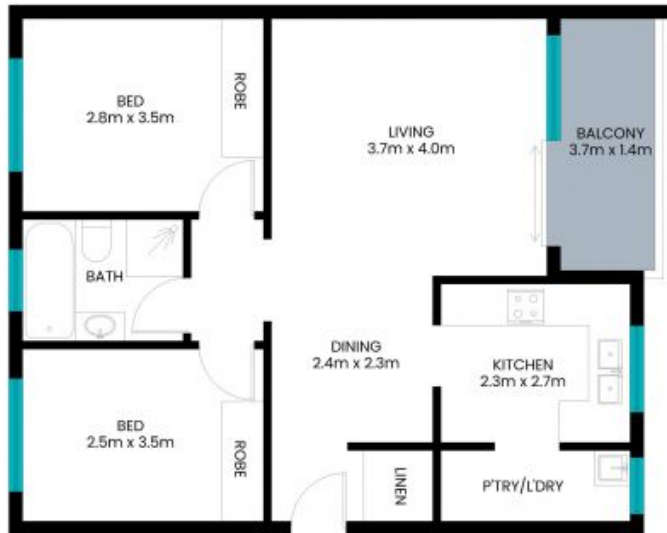
Ryan Woo

0410 884 680



Andrew Braid

0404 979 597



(NOT ACTUAL LOCATION)

Floor area: 76m²
Garage area: 18m²
Total area (approx.): 94m²

The site plan and floor plan are not to scale; measurements are indicative and in meters. Bushes and trees are placed for illustration purposes. Plans should not be relied on. Interested parties should make and rely on their own enquire. All other information provided has been collected from reliable sources but cannot be guaranteed for accuracy.