

13 Silverwisp Road Chisholm, NSW



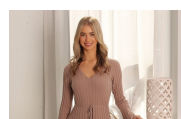
Style & space for a large family in Waterford Estate

Created to capture the essence of high quality style, this G.J. Gardner built home offers the best of family living in Waterford Estate. Stretch out in the three separate living areas, cook up a storm in the large kitchen with butler's pantry, entertain alfresco all year round, and enjoy some quiet time in the oversized master suite. Childcare, primary and high schools are all within easy walking distance of home.

- Flowing single level design on low maintenance 584.4sqm block
- Kitchen with stone waterfall edges, dishwasher, gas cooktop
- Luxe master ensuite with freestanding bath, twin vanities, large shower
- Kids' wing featuring three bedrooms, family bathroom, and activities area
- Covered tiled alfresco with BBQ kitchen overlooks landscaped gardens
- Ducted air-conditioning and gas fire to keep things comfortable year round
- Located close to the new approved shopping village development
- Green Hills Shopping Centre and the new Maitland Hospital just 8 minutes away

Price:

\$1,000,000



Courtney Matheson

0400 768 103



David Tanchevski

02 4089 1111



The site plan and floor plan are not to scale; measurements are indicative and in metres. Bushes and trees are placed for illustration purposes. Plans should not be relied on. Interested parties should make and rely on their own enquiries. All other information provided has been collected from reliable sources but cannot be guaranteed for accuracy.

