



5/11 Belmont Avenue Wollstonecraft, NSW



APPLICATION APPROVED

Updated top floor, two bedroom apartment on the prized North-East corner of a sought-after building. The light-filled apartment will appeal to those looking for modern apartment living without compromising on space, quality or location. Enviably positioned only a short walk to Wollstonecraft station and an easy stroll to Crows Nest's cafe precinct. Features include:

Price: \$650 per week

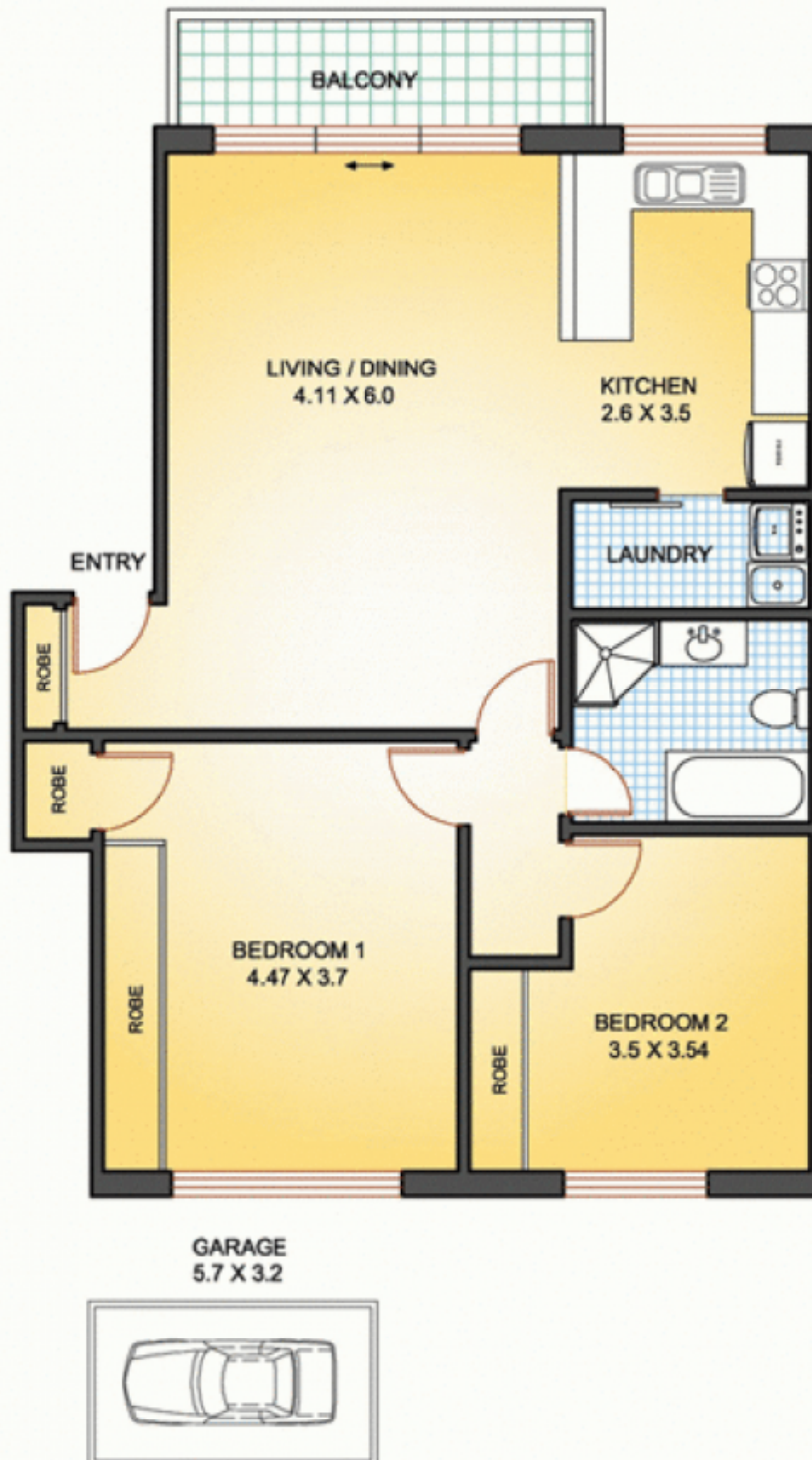
Bond: \$2,600

Available Date: 02/08/2023



Abigail Su

0400 110 831



5 / 11 BELMONT AVE WOLLSTONECRAFT

NOTE: Plans shown are for presentation purposes and are not part of any legal document or title. All measurements are approximate. Interested parties should make their own enquiries.