



5 Woodford Road Rockdale, NSW

5

4

3

Enormous like-new home with soaring views

Absolutely stunning inside and out, this meticulously renovated cul-de-sac home has a towering district outlook across the airport and Botany Bay.

Sprawling over three levels, plus a basement, the solid brick abode makes the most of its north-facing position and stunning views, with open-plan living and balconies oriented accordingly.

Along with the three downstairs bedrooms, there are two more upstairs, plus a bathroom and family room with kitchenette, providing the possibility of self-contained in-law accommodation.

- Cul-de-sac position with captivating views from yard and living zones.

- Glamorous new bathrooms and stone-topped gas kitchen.

Price:

Offers Invited



Sam Abbas

0406 750 075



Tanios Azzi

0412 772 369

5 Woodford Road
Rockdale



Ground Floor



Lower Ground Floor



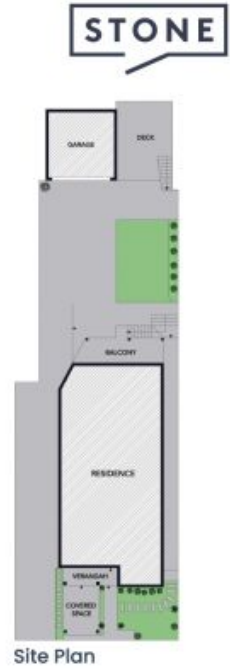
Lower Ground Floor



First Floor



Basement



Site Plan

STONE



The site plan and floor plan are not to scale; measurements are indicative and in metres. Bushes and trees are placed for illustration purposes. Plans should not be relied on. Interested parties should make and rely on their own enquiries. All other information provided has been collected from reliable sources but cannot be guaranteed for accuracy.

5 Woodford Road
Rockdale



Ground Floor



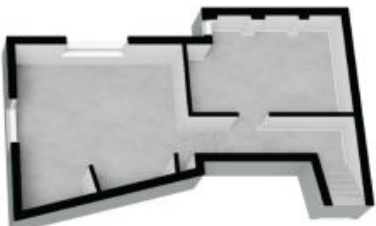
Lower Ground Floor



Lower Ground Floor



First Floor



Basement



The floor plan is not to scale; measurements are indicative and in metres. All features included in this 3D plan are for inspiration purposes only. This is not an exact replica of the property or the position of exterior elements. Plans should not be relied on. Interested parties should make and rely on their own enquiries.