



21 Tipping Place Ambarvale, NSW



### Stylish family home

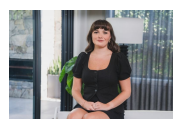
A stylish family home offering a range of impressive features that cater to your every need. Boasting three well-proportioned bedrooms, this inviting brick residence sits on a spacious 603m<sup>2</sup> block, providing ample space for the whole family.

**Price:** \$787,000



**Gary Luke**

0418 451 105



**Kaitlin Hall**

0404 529 516

21 Tipping Place  
Ambarvale

STONE



The floor plan is not to scale; measurements are indicative and in metres. All features included in this 3D plan are for inspiration purposes only. This is not an exact replica of the property or the position of exterior elements. Plans should not be relied on. Interested parties should make and rely on their own enquiries.

21 Tipping Place  
Ambarvale

STONE



The floor plan is not to scale, measurements are indicative and in metres. Exterior elements are not in position. Plans should not be relied on, interested parties should make and rely on their own enquiries. All other information provided has been collected from reliable sources but cannot be guaranteed for accuracy.