

55/32-34 Mons Road Westmead, NSW

3

2

2

Light-filled Interiors - Westmead Hospital Precinct

Located in Westmead's Hospital Precinct, this over-sized apartment offers convenience and comfort with bright interiors. Close to medical amenities and services, as well as local shops, schools and transport. The apartment boasts an open plan living & dining area flooded with natural light, spacious bedrooms and a huge outdoor entertaining area.

Price: \$720,000



Simar Gill

0410 312 242



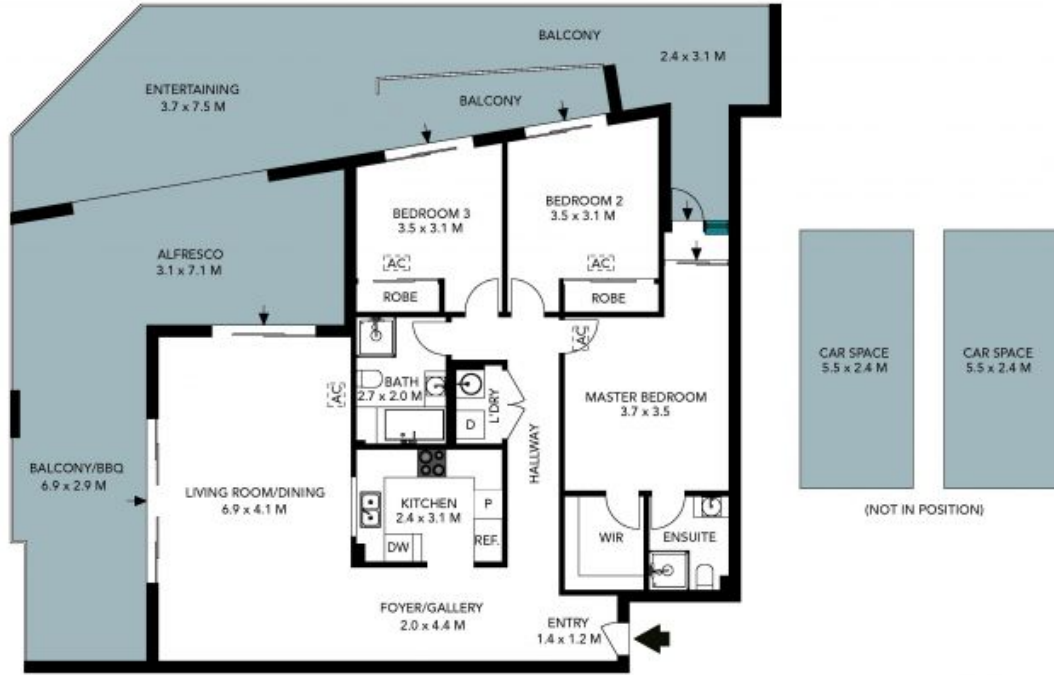
Chris Kypreos

0432 354 445

55/32 Mons Rd
Westmead



The floor plan is not to scale; measurements are indicative and in metres. All features included in this 3D plan are for inspiration purposes only. This is not an exact replica of the property or the position of exterior elements. Plans should not be relied on. Interested parties should make and rely on their own enquiries.



The floor plan is not to scale, measurements are indicative and in metres. Exterior elements are not in position. Plans should not be relied on, interested parties should make and rely on their own enquiries. All other information provided has been collected from reliable sources but cannot be guaranteed for accuracy.