



1504/41-45 Waitara Avenue Waitara, NSW



Sold by Geraldine Wang 0452 562 183

Sold by Geraldine Wang 0452 562 183

Situated on level 5 of a well-maintained complex known as 'Waldorf Waitara', this bright and private one bedroom unit with true open plan, light-filled both living and bedroom, easy flow to an oversized entertainer balcony which boasts impressive uninterrupted views over the "Mark Taylor" Oval, tennis courts and children playground, offers relaxing carefree lifestyle with urban vibe in an enviable parkside convenient enclave, easy walk to bus, either Waitara or Hornsby stations, parks, Westfield's abundance of shops and eateries, and Waitara Public School. Perfect for the first home buyers, downsizers, or investors.

Price:

Sold by Geraldine Wang



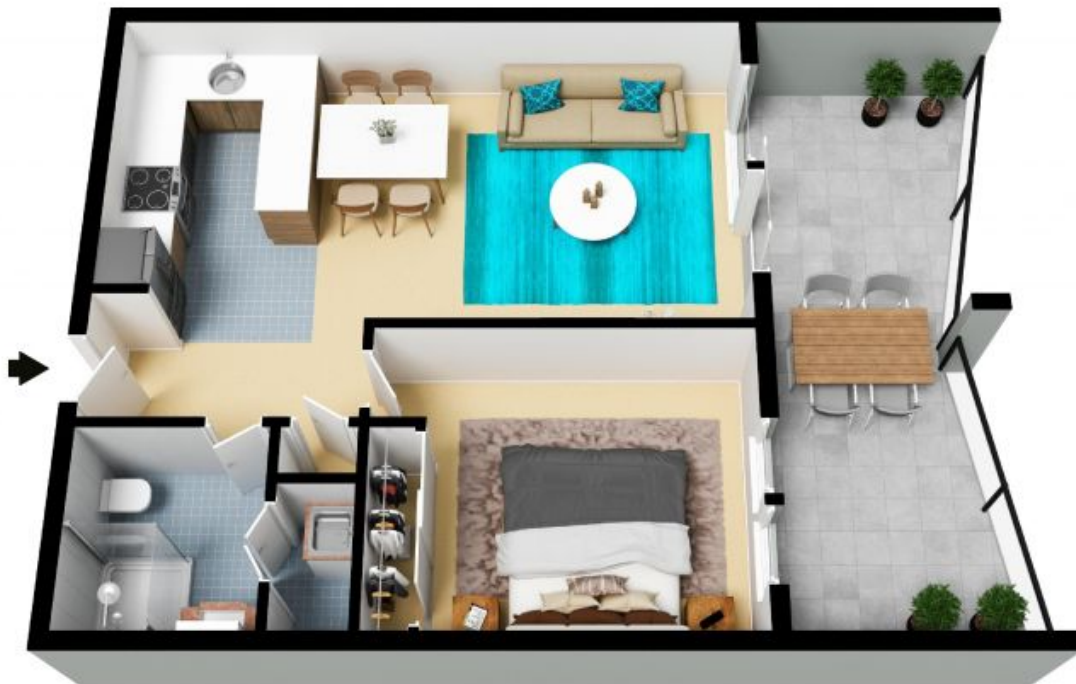
Geraldine (Xiao-Bin) Wang 0452 562 183



Adam Noakes 0450 753 268

1504/41-45 Waitara Avenue
Waitara

STONE



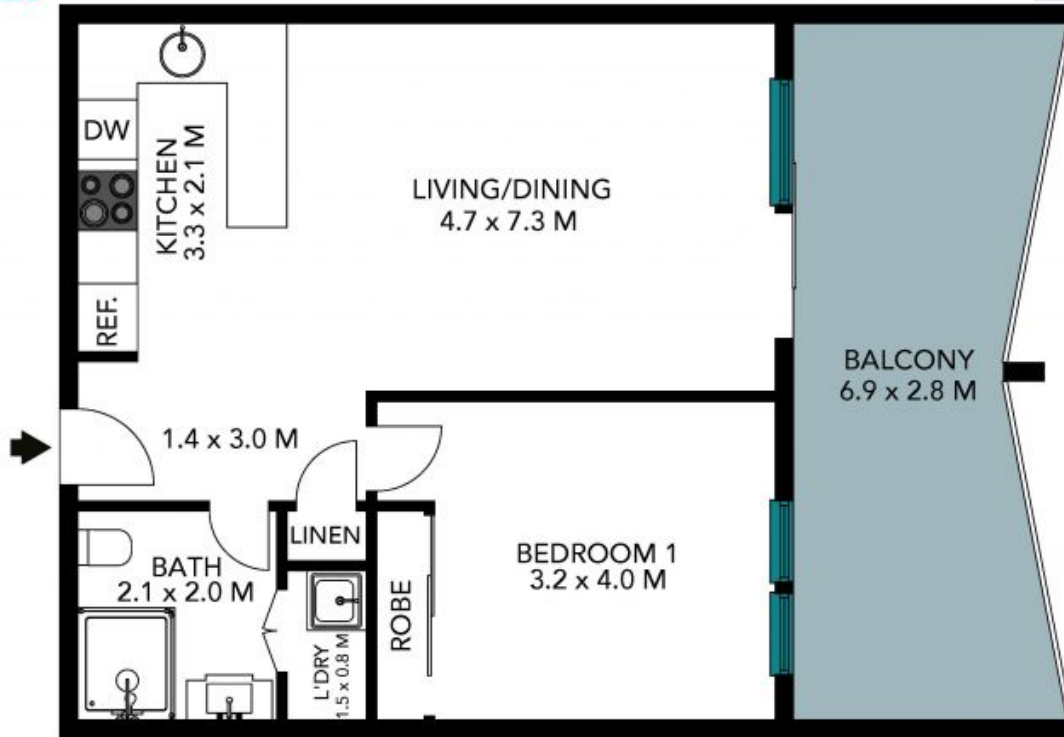
Internal Living: 49 sqm
External Living: 17 sqm
Total Living Area: 66 sqm



The floor plan is not to scale; measurements are indicative and in metres. All features included in this 3D plan are for inspiration purposes only. This is not an exact replica of the property or the position of exterior elements. Plans should not be relied on. Interested parties should make and rely on their own enquiries.

1504/41-45 Waitara Avenue
Waitara

STONE



Internal Living: 49 sqm
External Living: 17 sqm
Total Living Area: 66 sqm



The floor plan is not to scale, measurements are indicative and in metres. Exterior elements are not in position. Plans should not be relied on, interested parties should make and rely on their own enquiries. All other information provided has been collected from reliable sources but cannot be guaranteed for accuracy.