



3/133 Greenwich Road Greenwich, NSW

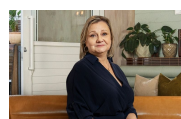


Olde World Charm + Space & Convenience

Centrally located, this beautifully appointed period-style apartment is situated a short distance from the lively hub of Greenwich Village suitable for a Professional Couple &/or Young Family

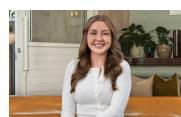
Price: LEASED - \$720 per week

Available Date: 18/08/2023



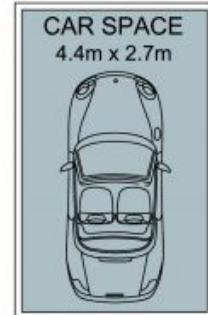
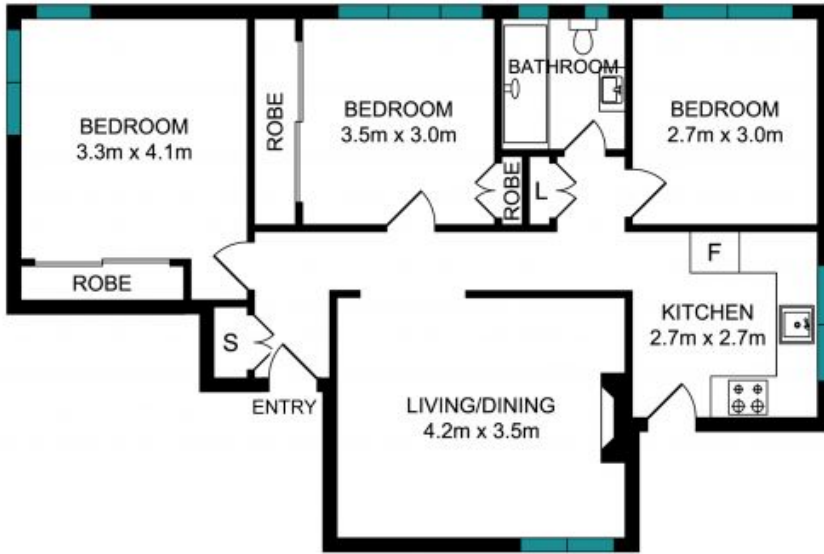
Diane Shipley

0413 137 874



Jaydn Frintzilas

0468 998 294



The floor plan is not to scale, measurements are indicative and in metres. Coloured elements are not in position. Plan should not be relied on. Interested parties should make and rely on their own enquiries. All other information provided has been collected from reliable sources but cannot be guaranteed for accuracy.

1/133 Greenwich Road, Greenwich

