



21 Karril Avenue Beecroft, NSW



Single level perfection steps from parks and schools

Lavishly scaled and effortlessly functional, this immaculate entertainer on 1,012sqm caters to every stage of family life with an enticing sense of space and sophistication. Its single level appeal is matched by warmly inviting interiors designed with two spacious living quarters, and ideally configured for guests, in-laws or larger families to spread out. Green garden-view alcoves feature inside, while its peaceful street address sits moments from a shortcut to St Gerards, Roselea Public and Carlingford High schools.

Price: Contact Agent
Council Rates: \$679.30 p/q
Water Rates: \$173.29 p/q



Kevin Dearlove

0403 338 302

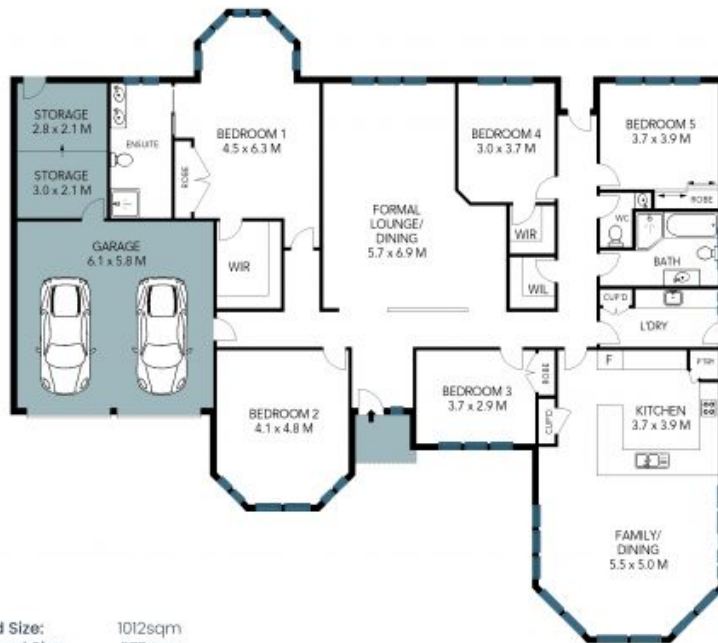


Brian Kong

0435 333 383

21 Karril Avenue
Beecroft

STONE



SITE PLAN

Land Size: 1012sqm
Internal Size: 277sqm

The site plan and floor plan are not to scale; measurements are indicative and in metres. Bushes and trees are placed for illustration purposes. Plans should not be relied on. Interested parties should make and rely on their own enquiries. All other information provided has been collected from reliable sources but cannot be guaranteed for accuracy.