



115/47-49 The Esplanade Ettalong Beach, NSW 2 2 1

### Atlantis apartment Ettalong Beach

Positioned right in the heart of Ettalong Beach is this stylish apartment with ocean views is just meters to the sand!

Ettalong Beach's most prestigious building - Atlantis, offering video intercom security access, basement parking and a breath-taking infinity pool with 180 degree views. In the heart of Ettalong Beach with restaurant's, cafe's, the Memorial Club and Palm Beach Ferry on your doorstep.

Looking for a lifestyle change or a getaway an easy commute from the city while living just footsteps to a variety of restaurants, cafes and shops this property has proven to be the ideal lifestyle !

- Modern well thought out design on the beachfront
- Water views to Lion Island from your balcony
- Master bedroom with ensuite and large built in robe
- Spacious 2nd bedroom with built in robe

**Price:** \$985,000  
**Council Rates:** \$1,066.00/year (approx)  
**Water Rates:** \$633.96/year (approx)  
**Strata Rates:** \$916.16 p/q



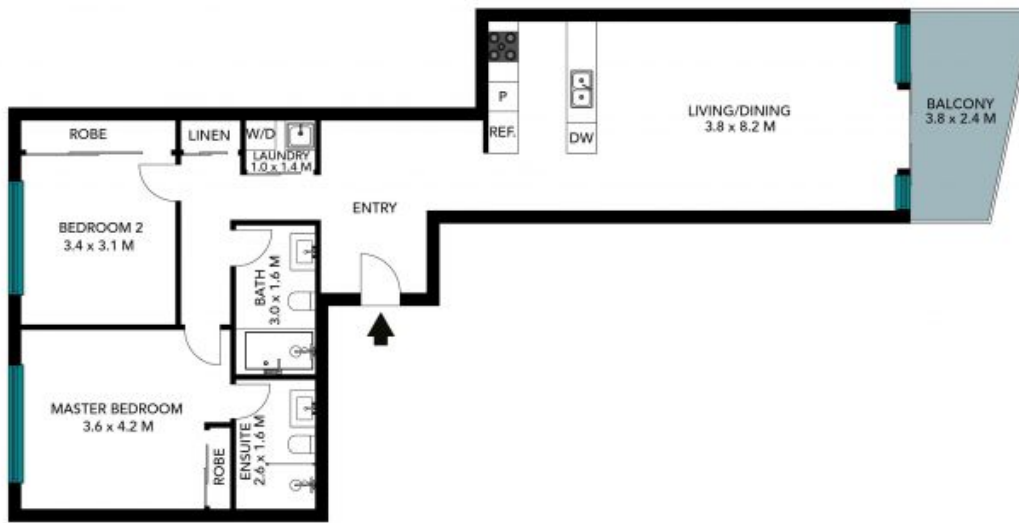
**Christel Renton**

0417 208 314



**Helen Hughes**

0418 220 622



The floor plan is not to scale; measurements are indicative and in metres. Exterior elements are not in position. Plans should not be relied on. Interested parties should make and rely on their own enquiries. All other information provided has been collected from reliable sources but cannot be guaranteed for accuracy.



115/47-49 The Esplanade, Ettalong Beach





The floor plan is not to scale, measurements are indicative and in metres. All features included in this 3D plan are for inspiration purposes only. This is not an exact replica of the property or the position of exterior elements. Plans should not be relied on. Interested parties should make and rely on their own enquiries.

115/47-49 The Esplanade, Ettalong Beach

