

202/1081a Old Princes Highway Engadine, NSW



Modern apartment guarantees lifestyle convenience

Set within the 'Gallery' building, this luxurious second floor apartment offers an ultra-convenient lifestyle in the heart of Engadine. The well designed layout has spacious living and sleeping zones, quality bathrooms plus a large entertainers' balcony. The property is a stroll from Engadine Town Square, cafes, restaurants, buses and the station, while only moments from the Royal National Park.

Price: \$725,000
Council Rates: \$303.50 p/q
Water Rates: \$173.29 p/q
Strata Rates: \$1,257.25 p/q



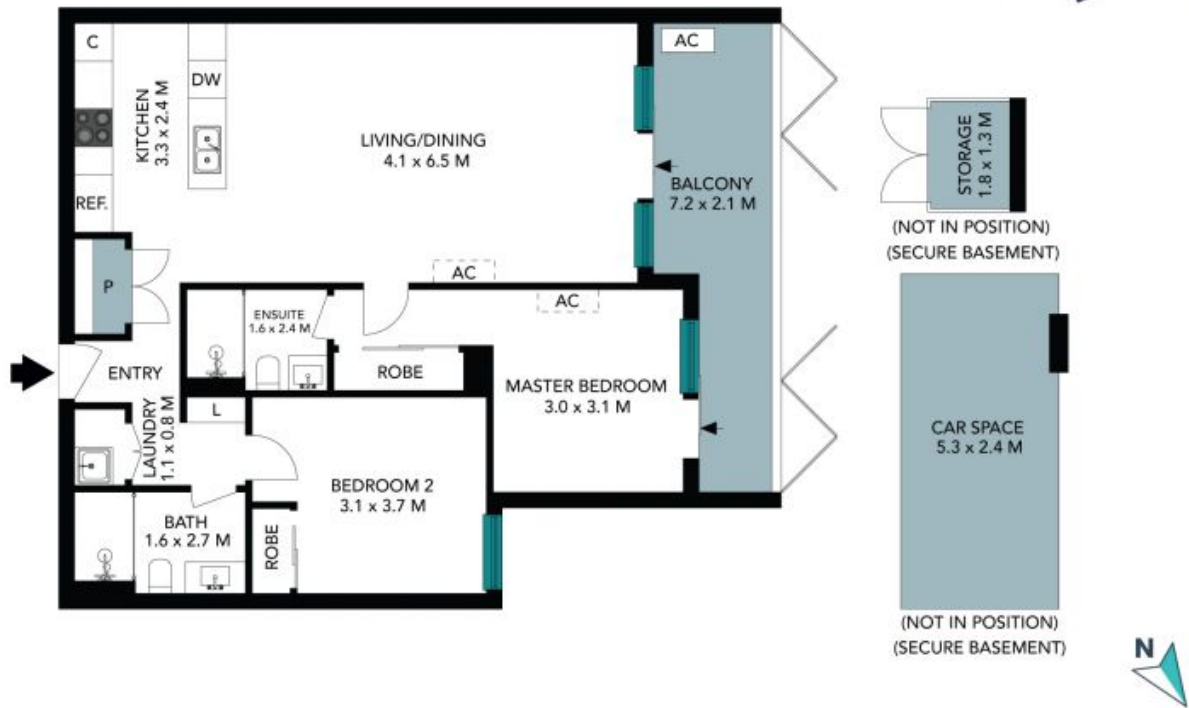
Rhys Christofa

0415 684 877



Ezra Malolo

0401 490 024



The floor plan is not to scale; measurements are indicative and in metres. Exterior elements are not in position. Plans should not be relied on. Interested parties should make and rely on their own enquiries. All other information provided has been collected from reliable sources but cannot be guaranteed for accuracy.

202/1081A Old Princes Highway
Engadine



The floor plan is not to scale; measurements are indicative and in metres. All features included in this 3D plan are for inspiration purposes only. This is not an exact replica of the property or the position of exterior elements. Plans should not be relied on. Interested parties should make and rely on their own enquiries.