

6 Tanderra Crescent Ngunnawal, ACT

5

2

5

### ?WELCOME TO THE PENINSULA?

A WORD FROM OUR SELLERS;

"We selected this block for our house because of the spectacular panoramic views. Our architect created a liveability focused house design that maximises the outlook and views from every room, and that has easily adapted to our changing needs including inspirational and practical workspaces. The extensive low maintenance gardens are lush, green, and tranquil spaces that make it a joy to spend time outdoors. The seasonal colour changes and a variety of plants that attract many species of birds, create picture perfect scenes and sounds all year round.

Living: 286sqm  
Garage: 41sqm  
Store/Cellar: 21.7sqm...  
Total: 348.7sqm...  
Block: 1128sqm...

...  
- Segregated master suite complete with custom joinery, walk in robe and generous ensuite ...

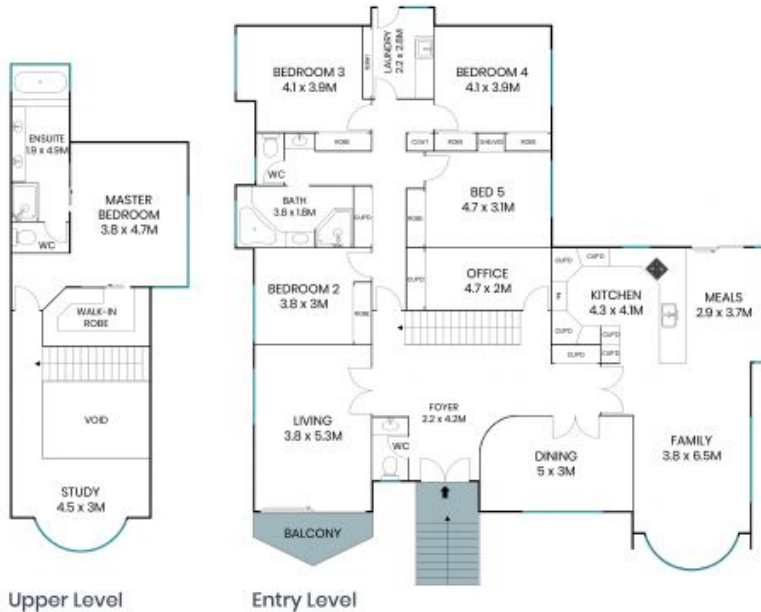
Price: By Negotiation



**Kris Hellier**

0413 799 700

6 Tanderra Crescent  
Ngunnawal



Upper Level

Entry Level



Basement

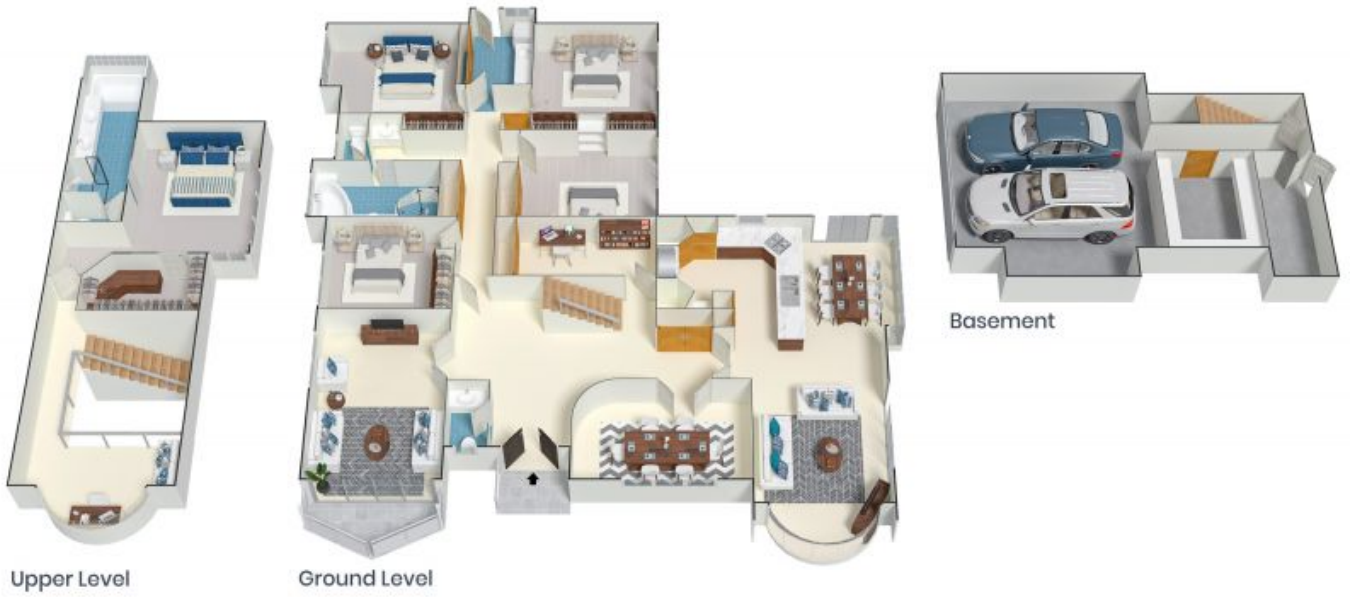


Site Plan



The site plan and floor plan are not to scale; measurements are indicative and in metres. Bushes and trees are placed for illustration purposes. Plans should not be relied on. Interested parties should make and rely on their own enquiries. All other information provided has been collected from reliable sources but cannot be guaranteed for accuracy.

6 Tanderra Crescent  
Ngunnawal



The floor plan is not to scale; measurements are indicative and in metres. All features included in this 3D plan are for inspiration purposes only. This is not an exact replica of the property or the position of exterior elements. Plans should not be relied on. Interested parties should make and rely on their own enquiries.