

7/11-15 Fairview Avenue The Entrance, NSW

2 2 1

Exquisite North-Facing Modern Unit

Discover the epitome of coastal living with this stunning North-facing unit located in the highly sought-after complex of Fairview Avenue, The Entrance. Boasting a prime location and an array of exceptional features, this modern abode offers an unmatched blend of luxury and convenience.

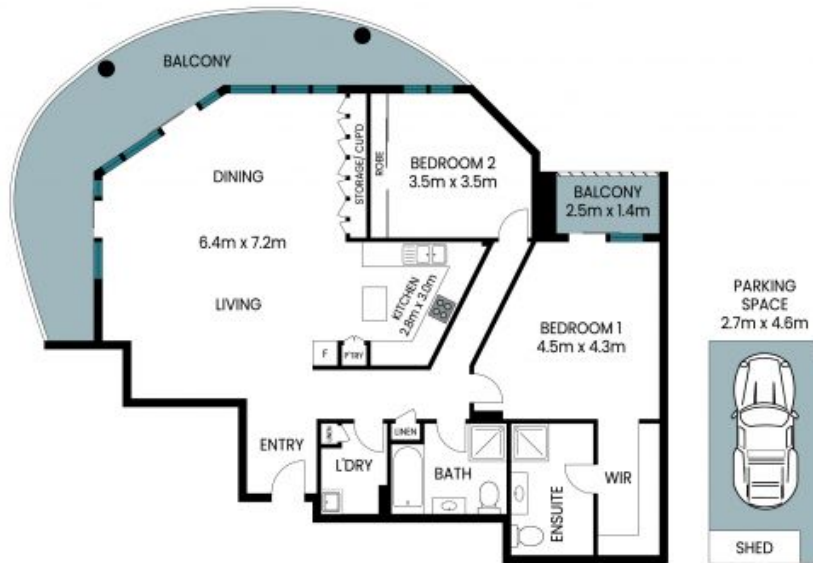
Price: \$720,000
Council Rates: \$209.00 p/q
Water Rates: \$228.00 p/q
Strata Rates: \$1,144.00 p/q



Tony Trinder

0437 787 221

7 11-15 Fairview Avenue
The Entrance



Internal Area: 114 sqm
External Area: 29 sqm
Car Space: 12 sqm
Total Area: 155 sqm

PLEASE NOTE: These Floor and Site Plans have been generated for marketing purposes and are to be used as a guide only. While all care is taken, no guarantee can be given in respect of accuracy, sizes and dimensions are approximate, actual may vary

