



8/19A Addison Road Manly, NSW

3

2

1

### Harbourfront trophy villa with private beach

Moored above a private sandy beach on the shores of Manly Cove with scintillating point blank harbour panoramas from almost every room, this rare and exclusive waterfront trophy home promises a lifestyle experience simply beyond compare. Quality renovations provide a superb contemporary vibe across three bright and breezy levels, while a sunlit northeast courtyard and harbourside entertainers' terrace provide private spaces to bask in the sun or marvel at the ever-changing views. Peacefully tucked away in an exclusive Eastern Hill cul-de-sac, it is a short stroll around the bay to Manly's vibrant village hub, the wharf and a selection of beaches.

- Intimate views extend over a beach and reef to Manly Cove and North Harbour
- Gaze from Reef and Balmoral Beach to the Eastern Suburbs and city skyline
- Listen to waves gently lapping below or take in sunsets on the terrace or beach
- Generous living and dining embraces mesmerising floor-to-ceiling harbour views
- Glass sliders open to harbourside entertainers' terrace with glass balustrades
- Stylish open plan CaesarStone kitchen and dishwasher and water views
- Spacious bedrooms with built-ins, two open to private harbour-view balconies

**Price:** \$6,000,000



**Candice Cattell**

0417 311 777

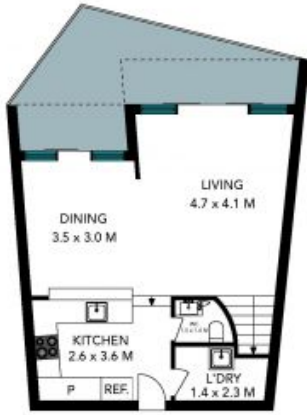


**Tim Mumford**

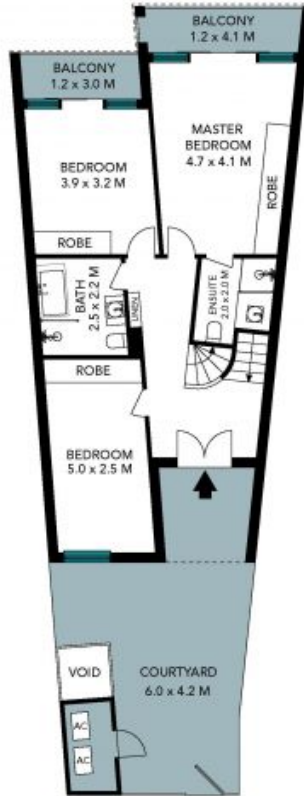
0421 942 693

8/19A Addison Road  
Manly

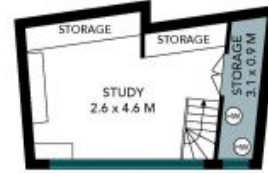
STONE



Lower Ground Floor



Ground Floor



1st Floor



The floor plan is not to scale; measurements are indicative and in metres. Detail elements are not in position. Plans should not be relied on. Interested parties should make and rely on their own enquiries. All other information provided has been collected from reliable sources but cannot be guaranteed for accuracy.

8/19A Addison Road  
Manly

STONE



Lower Ground Floor



Ground Floor



1st Floor



The floor plan is not to scale; measurements are indicative and in metres. All features included in this 3D plan are for inspiration purposes only. This is not an exact replica of the property or the position of exterior elements. Plans should not be relied on. Interested parties should make and rely on their own enquiries.