



13 Hibbard Court Collingwood Park, QLD 4 2 2

### ANOTHER SUCCESSFUL SALE BY THE TEAM AT STONE LOGAN WEST

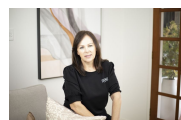
Constructed in 2020, this double-storey residence was designed to excite families prioritising comfort, style and low maintenance ease. Boasting a contemporary facade and a light-filled, modern interior, the home is ready to move in and enjoy.

**Price:** Offers Over \$620,000  
**Council Rates:** \$559.15 p/q



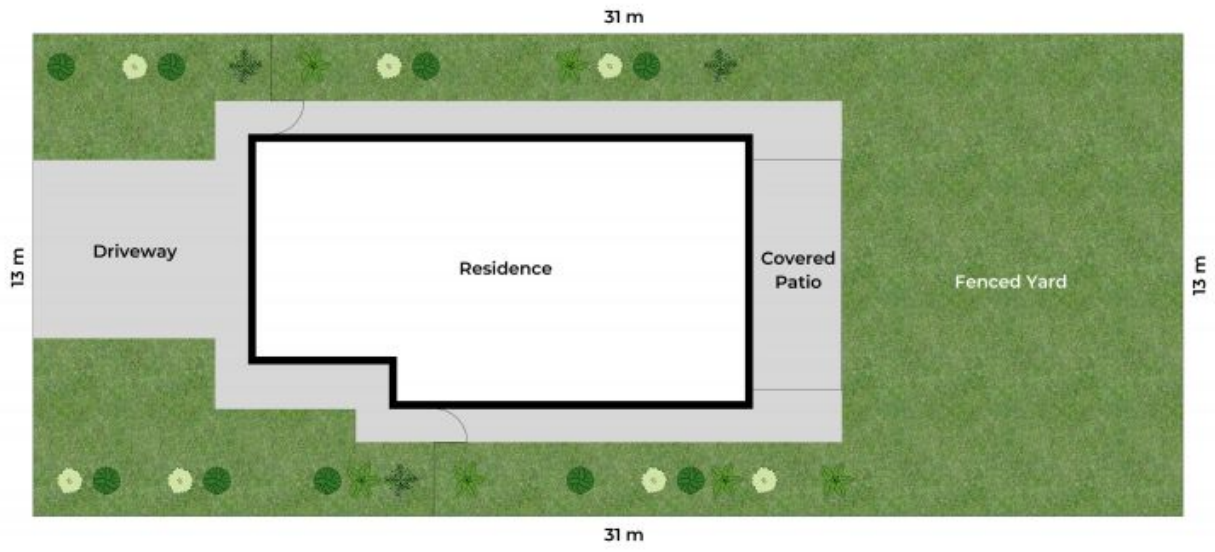
**Bridgette Griffiths**

0430 445 750



**Leanne Gunn**

0413 817 092



Lot Area | 403 m<sup>2</sup>



Unless otherwise stated, all dimensions are in metres. Star arrows indicate the upward direction. This plan and information contained within is for illustrative purposes only and not guaranteed to be exact. Interested parties should make their own enquiries.



Approx. Floor Area | Internal 180 m<sup>2</sup> | External 15 m<sup>2</sup> | Total 195 m<sup>2</sup>

Unless otherwise stated, all dimensions are in metres. Star arrows indicate the upward direction. This plan and information contained within is for illustrative purposes only and not guaranteed to be exact. Interested parties should make their own enquiries.

