



33/43 Lindfield Avenue Lindfield, NSW

4 

4 

3 

State of the art penthouse delivers ultimate luxury

A masterclass in luxury living, this exclusive double storey penthouse showcases a layout of epic proportions to deliver the ultimate in privacy, security, and pure exhilaration. 559sqm approx. on title, where the home opens into the grandeur of super-scaled interiors enhanced by vaulted ceiling and adorned by designer finishes and cutting-edge amenity. Bedrooms include a sumptuous master with opulent ensuite and dressing room. The two levels of living and entertaining enjoy spectacular horizon views, breathtaking sunsets, and a lavish private pool.

- Vast 559sqm approx. on title, two-storey penthouse, sunlit north orientation
- Lavish interiors, lounge and dining with vaulted ceiling and soaring windows
- Masterpiece Miele kitchen with Calcutta marble benchtops, butler's pantry
- 2 gas cooktops, pyro oven, microwave, warming drawer, and dishwasher
- Motorised blinds & awnings, 2 substantial entertaining terraces, balconies
- Four bedrooms, two ensuites, built-in/walk-in robes, access to balconies
- Master with dressing room, sumptuous ensuite, oval bath, 2 marble vanities
- Four bathrooms, 4th proximate to pool, Calcutta marble, task lighting

Price:

Contact Agent



Steven Kourdis

0402 555 675

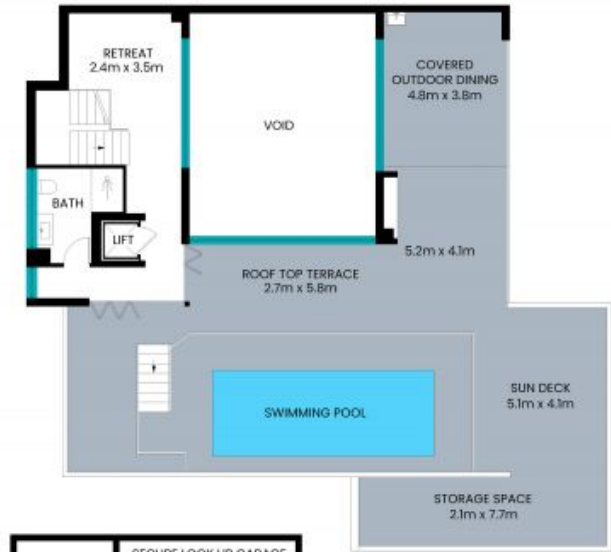


Christopher Smith

0432 369 197

33/43 Lindfield Avenue
Lindfield

STONE



(NOT ACTUAL LOCATION)



Internal area: 268m²
 External area: 203m²
 Garage area: 53m²
 Storage cage: 35m²
 Total area (approx): 559m²

The site plan and floor plan are not to scale; measurements are indicative and in meters. Bushes and trees are placed for illustration purposes. Plans should not be relied on. Interested parties should make and rely on their own enquiry. All other information provided has been collected from reliable sources but cannot be guaranteed for accuracy.