



3/10 Eustace Street Manly, NSW

2 

1 

Art Deco lifestyle pad by the harbour and village

Graced with character and prepared for your immediate enjoyment, this semi-like apartment is perfectly positioned on the rear northeast corner of a boutique building with level access. You'll never miss a beat in this peaceful setting with the beach at Manly Cove, Manly Wharf and cosmopolitan eateries only footsteps away plus world-famous Manly Beach a level wander down The Corso.

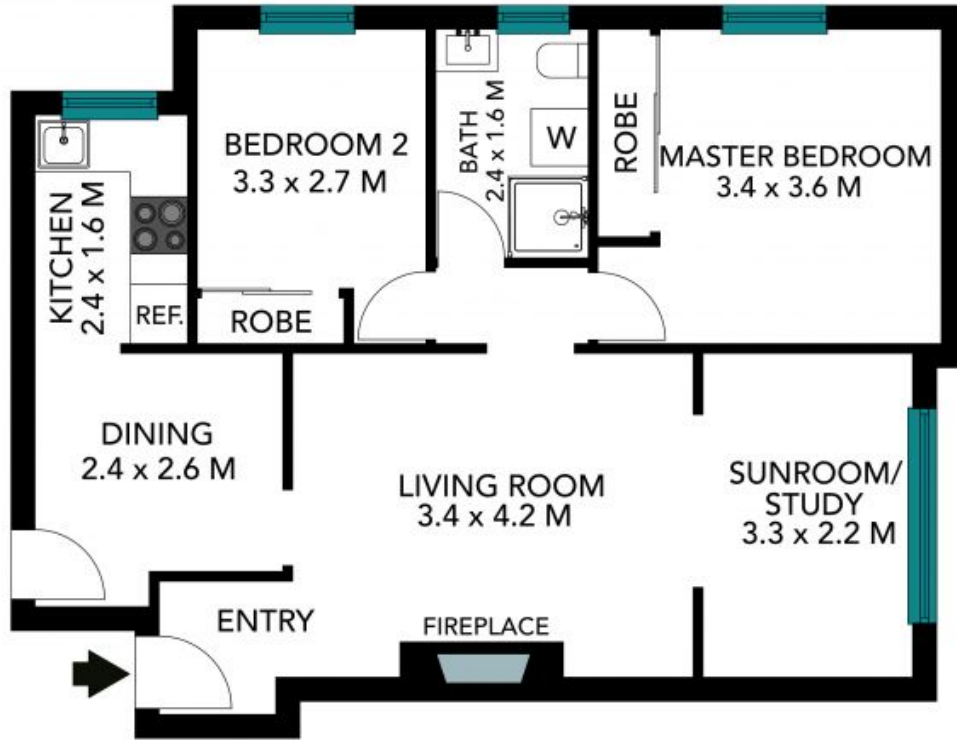
Price: Deposit Taken pw
Available Date: 18/09/2023



Briannah Ferris
02 8962 2200



Tameka Kitchener



The floor plan is not to scale, measurements are indicative and in metres. Colour elements are not to position. Plans should not be relied on. Interested parties should make and rely on their own enquiries. All other information provided has been collected from reliable sources but cannot be guaranteed for accuracy.

3/10 Eustace Street, Manly





The floor plan is not to scale, measurements are indicative and in metres. All features included in this 3D plan are for inspiration purposes only. This is not an exact replica of the property or the position of exterior elements. Plans should not be relied on. Interested parties should make and rely on their own enquiries.

3/10 Eustace Street, Manly

