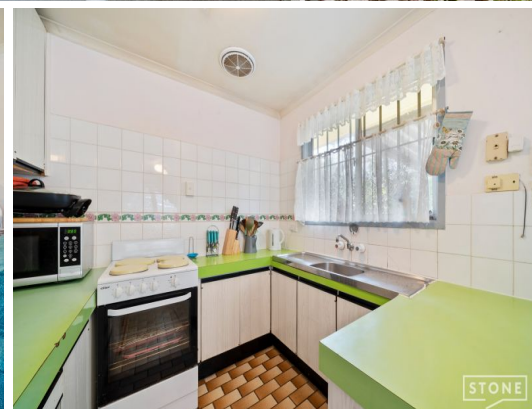


STONE



34 Lynelle Street Marsden, QLD

3 

2 

3 

UNDER CONTRACT BY JASON SAVAGE & IBRAHIM SULVIC

Price:

\$565,000

Large Highset Home, Dual Living Potential



Jason Savage

0401 546 762



Ibrahim Sulvic

0421 564 841



First Floor

Second Floor

34 Lynelle st, Marsden

Internal Size: 135sqm | External: 129sqm | Total Size: 264sqm



Jason Savage | 0401 546 762

This floor plan is for illustrative purposes only. Whilst every attempt has been made to ensure the accuracy of this floor plan, all measurements are approximate only. No responsibility is taken for any errors, omission or mis-statement. Potential purchasers should make their own enquiries as to the accuracy of this floor plan.