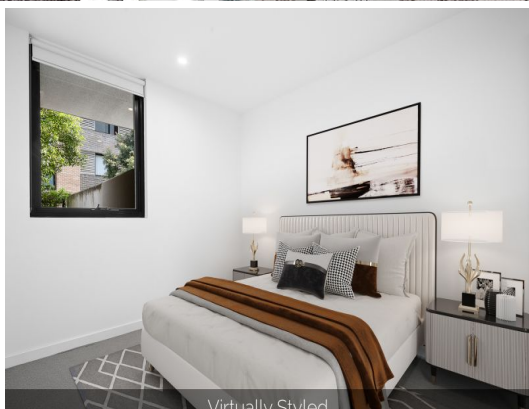


Virtually Styled



Virtually Styled



2.107/18 Hannah Street Beecroft, NSW

1 1 1

'Beecroft Place' garden apartment of luxury and liveability

A seamlessly finished contemporary prospect in 'Beecroft Place', this stylish executive abode encapsulates every quality of lifestyle brilliance. Tucked on the ground floor, it's a haven of privacy, comfort and lock-and-leave ease for busy professionals seeking Beecroft's lively retail and dining scene virtually at their doorstep, or an excellent investment that's fully appointed - with an exclusive address.

Price: \$650,000
Council Rates: \$341.00 p/q
Water Rates: \$159.00 p/q
Strata Rates: \$935.50 p/q



Kevin Dearlove

0403 338 302



Brian Kong

0435 333 383



The floor plan is not to scale. Measurements are indicative and in metres.

2.107/18 Hannah Street, Beecroft
stonerealestate.com.au

Produced by DIAKRIT



The interior style and design of this floor plan is designed for inspiration purposes to show the living spaces. It is not an exact replica of the furniture and fittings in the home.

2.107/18 Hannah Street, Beecroft
stonerealestate.com.au

Produced by DIAKRIT