



28 William Street Roseville, NSW

5

3

2

### Sold by Matt Payne & Sahil Kotian

Quality and craftsmanship take the lead in this generous renovated character home set on a sensational 1,265sqm approx. of level land. Locations don't come any better, with the leafy position an easy walk to Chatswood Chase, beautiful Beauchamp Park, and transport. Interiors show exquisite tradition blended with a modern layout that has ample space for larger families. Two living and dining areas, and generous bedrooms with a choice of master upstairs or downstairs. Seamless open flow to poolside alfresco entertaining savours the magnificent garden and rewards with relaxation.

Price:

Sold prior to Auction



**Matt Payne**

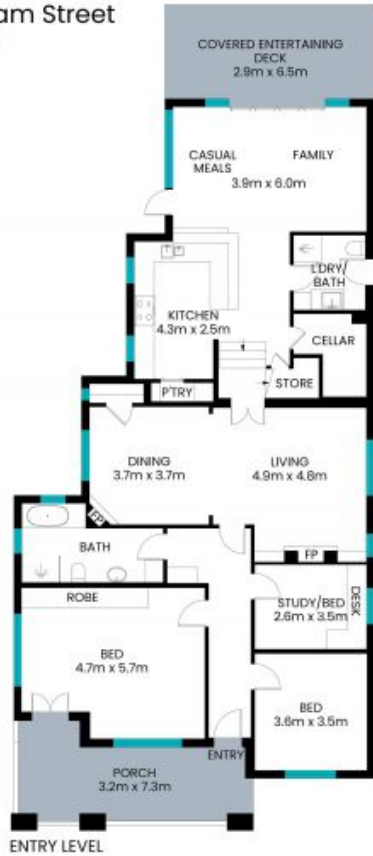
0435 825 242



**Sahil Kotian**

0434 172 588

28 William Street  
Roseville



The site plan and floor plan are not to scale; measurements are indicative and in meters. Bushes and trees are placed for illustration purposes. Plans should not be relied on. Interested parties should make and rely on their own enquiry. All other information provided has been collected from reliable sources but cannot be guaranteed for accuracy.