

2/27 Park Avenue Westmead, NSW

2 1 2

Stylish 2 bedroom apartment opposite Parramatta Park

Price: \$560,000

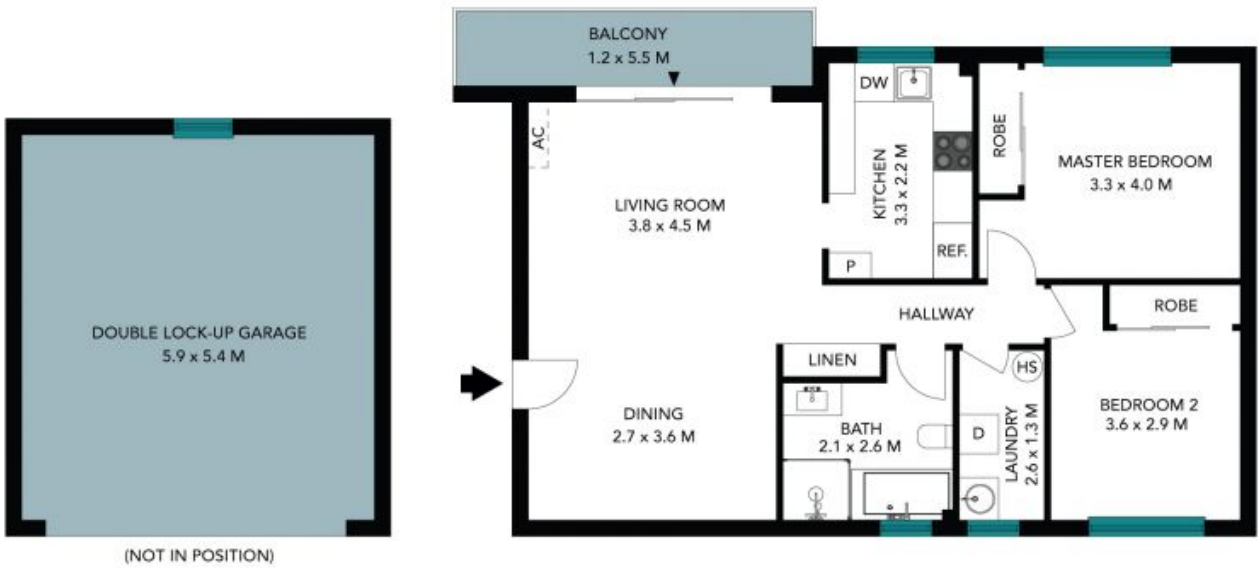
Offering a lifestyle of absolute convenience, this elevated 2 bedroom apartment is perfectly positioned in the highly sought after suburb of Westmead. Situated in a secure complex, directly opposite Parramatta Park, you will find yourself walking distance to Westmead Health Precinct, train station, well regarded schools and Parramatta CBD.



Simar Gill
0410 312 242



Chris Kypreos
0432 354 445



The floor plan is not to scale, measurements are indicative and in metres. Certain elements are not in position. Plans should not be relied on. Interested parties should make and rely on their own enquiries. All other information provided has been collected from reliable sources but cannot be guaranteed for accuracy.

2/27 Park Avenue
Westmead



The floor plan is not to scale; measurements are indicative and in metres. All features included in this 3D plan are for inspiration purposes only. This is not an exact replica of the property or the position of exterior elements. Plans should not be relied on. Interested parties should make and rely on their own enquiries.