



1/4 Allara Avenue Palm Beach, QLD 2 1 1

### Modernised sun kissed haven in vibrant Palm Beach

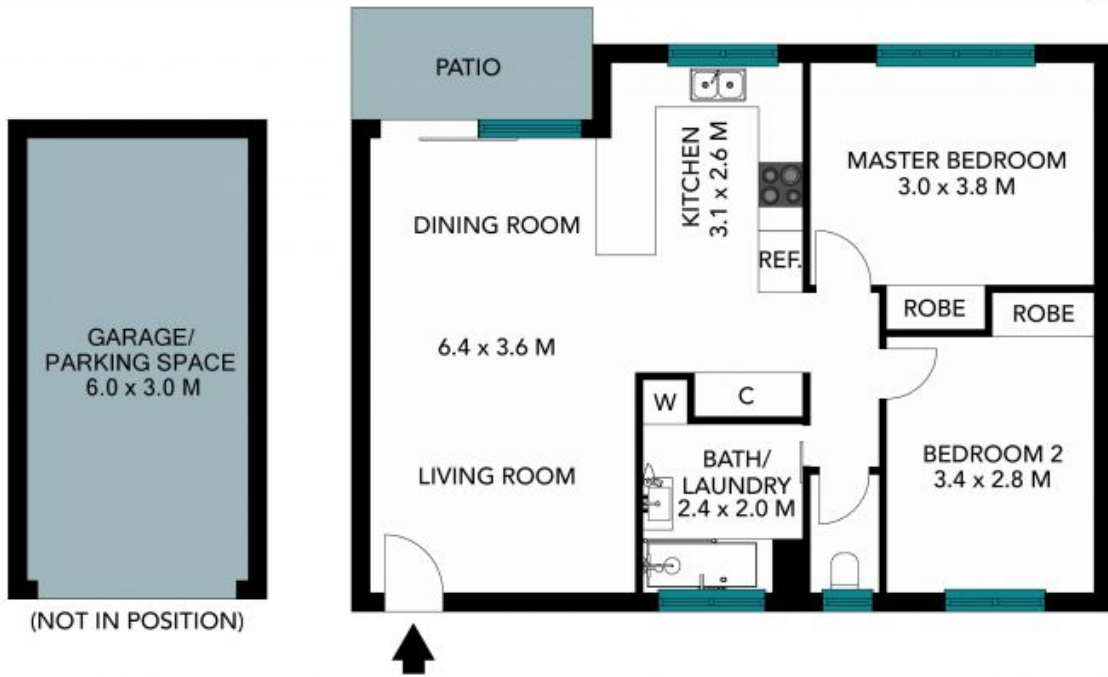
Perfectly located within 350 metres of the beach, this revitalised apartment is a smartly presented and ready to love lifestyle retreat. It's set on the ground floor of a tidy complex of eight residences and enjoys direct access to a shared garden. The unbeatable address is a leisurely bike ride or walk to coffee shops, restaurants, top surfing spots and Tallebudgera Creek.

**Price:** Guide Over \$699,000



**Brendan Andrews**

0417 788 882



1/4 Allara Avenue  
Palm Beach



The floor plan is not to scale; measurements are indicative and in metres. All features included in this 3D plan are for inspiration purposes only. This is not an exact replica of the property or the position of exterior elements. Plans should not be relied on. Interested parties should make and rely on their own enquiries.