



STONE



16/2489-2497 Gold Coast Highway Mermaid Beach, QLD



### Spacious 2 bedroom unit in the heart of Mermaid Beach

Price: Contact Agent

Located in the heart of Mermaid Beach this beachside beauty is a must to inspect!

Boasting patrolled beach, Surf Club and popular cafe all just steps from your front door. This gem offers the quintessential beachside lifestyle.

Set on the top floor of the 'Montana Surf' building (facing Montana Road), this north facing apartment features two good sized bedrooms including a master with walk in robe, ensuite and balcony, 2 secure car spaces in the basement and plenty of storage. The spacious open plan kitchen, living and dining area flows out onto a large terrace area, perfect for entertaining.

Features:

- 2 bedrooms (Master with ensuite, walk in robe & private balcony)
- 2 bathrooms
- Open plan living, kitchen and dining area
- Pool & tropical gardens



**Rebecca Leo**  
0419 880 822

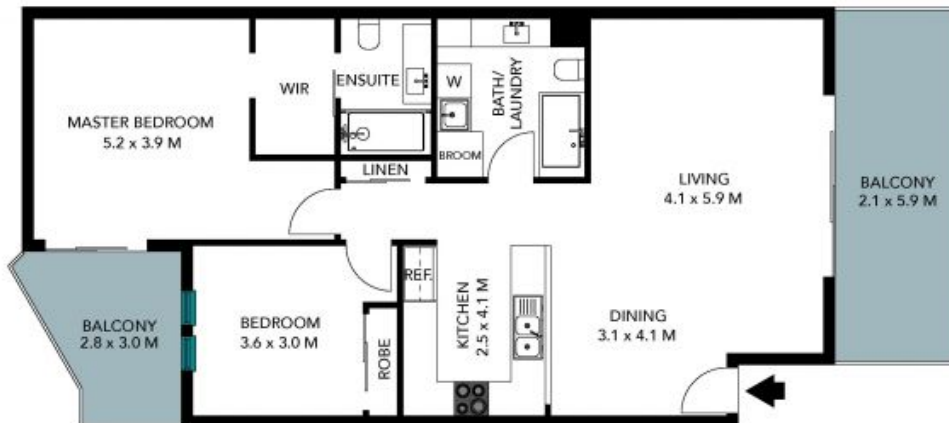


**Brendan Andrews**  
0417 788 882

16/2489-2497 Gold Coast Highway  
Mermaid Beach



(NOT IN POSITION)



Internal Living: 87 sqm  
External Living: 21 sqm  
Total Living Area: 108 sqm



The site plan and floor plan are not to scale; measurements are indicative and in metres. Bushes and trees are placed for illustration purposes. Plans should not be relied on. Interested parties should make and rely on their own enquiries. All other information provided has been collected from reliable sources but cannot be guaranteed for accuracy.



16/2489-2497 Gold Coast Highway  
Mermaid Beach

STONE



Internal Living: 87 sqm  
External Living: 21 sqm  
Total Living Area: 108 sqm



The floor plan is not to scale; measurements are indicative and in metres. All features included in this 3D plan are for inspiration purposes only. This is not an exact replica of the property or the position of exterior elements. Plans should not be relied on. Interested parties should make and rely on their own enquiries.