

THE JEFFERSON

STONE



401/60 Jefferson Lane Palm Beach, QLD



Secure your position on Jefferson Lane

Welcome to 'The Jefferson' Palm Beach. Boasting a design by award-winning architects BDA, and situated on level four of seven floors, this beautiful apartment offers a generous sized bedroom, one bathroom and one secure car space.

Price: \$476,000

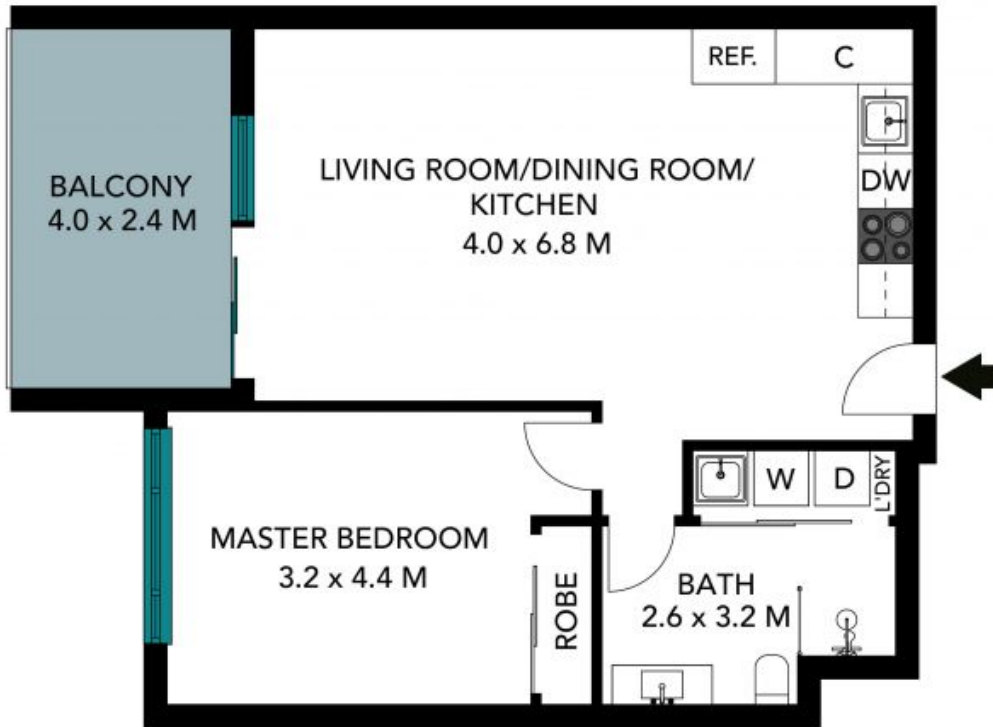
Council Rates: \$1,878.40/year (approx)

Water Rates: \$1,101.44/year (approx)



Rebecca Leo

0419 880 822



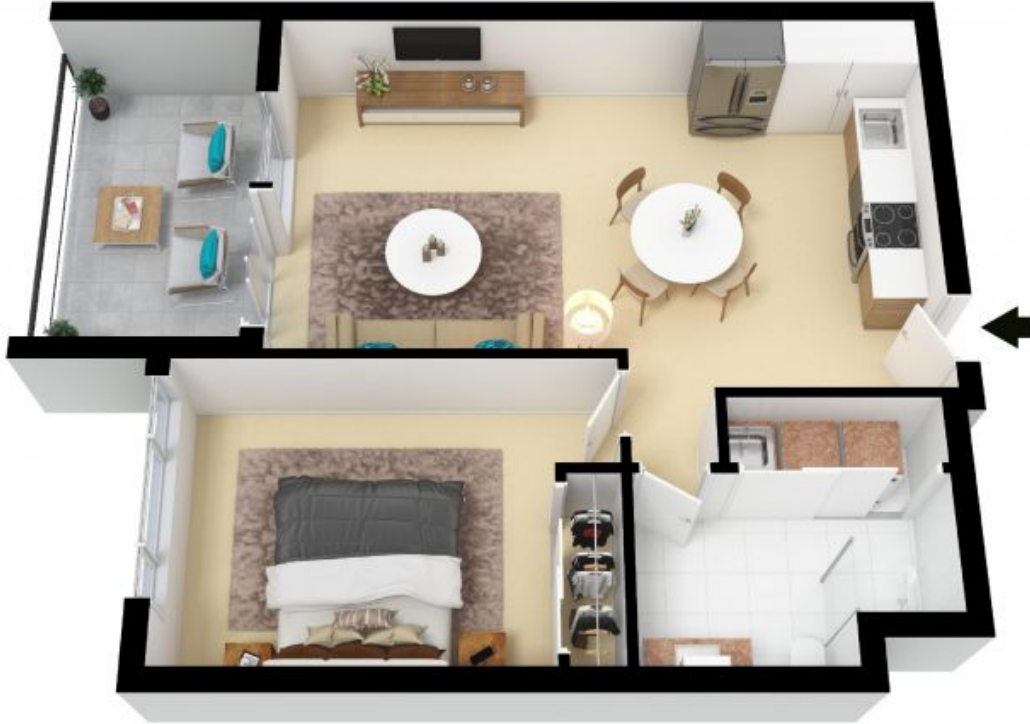
Internal Living: 62 sqm approx
 External Living: 9 sqm approx
 Total Living Area: 71 sqm approx

The floor plan is not to scale; measurements are indicative and in metres. Exterior elements are not in position. Plans should not be relied on. Interested parties should make and rely on their own enquiries. All other information provided has been collected from reliable sources but cannot be guaranteed for accuracy.



401/60 Jefferson Lane, Palm Beach





Internal Living: 62 sqm approx
External Living: 9 sqm approx
Total Living Area: 71 sqm approx

The floor plan is not to scale, measurements are indicative and in metres. All features included in this 3D plan are for inspiration purposes only. This is not an exact replica of the property or the position of exterior elements. Plans should not be relied on. Interested parties should make and rely on their own enquiries.

401/60 Jefferson Lane, Palm Beach



STONE