

12/1444 GOLD COAST HIGHWAY



12/1444 Gold Coast Highway Palm Beach, QLD



### Studio apartment in sought after beachside locale

Footsteps to the waves, this neat and tidy studio offers a low maintenance lifestyle and is perfect for the astute investor, downsizer or first home owner. It's situated in a quiet complex, mere moments from the bustling Palm Beach caf? and restaurant precinct.

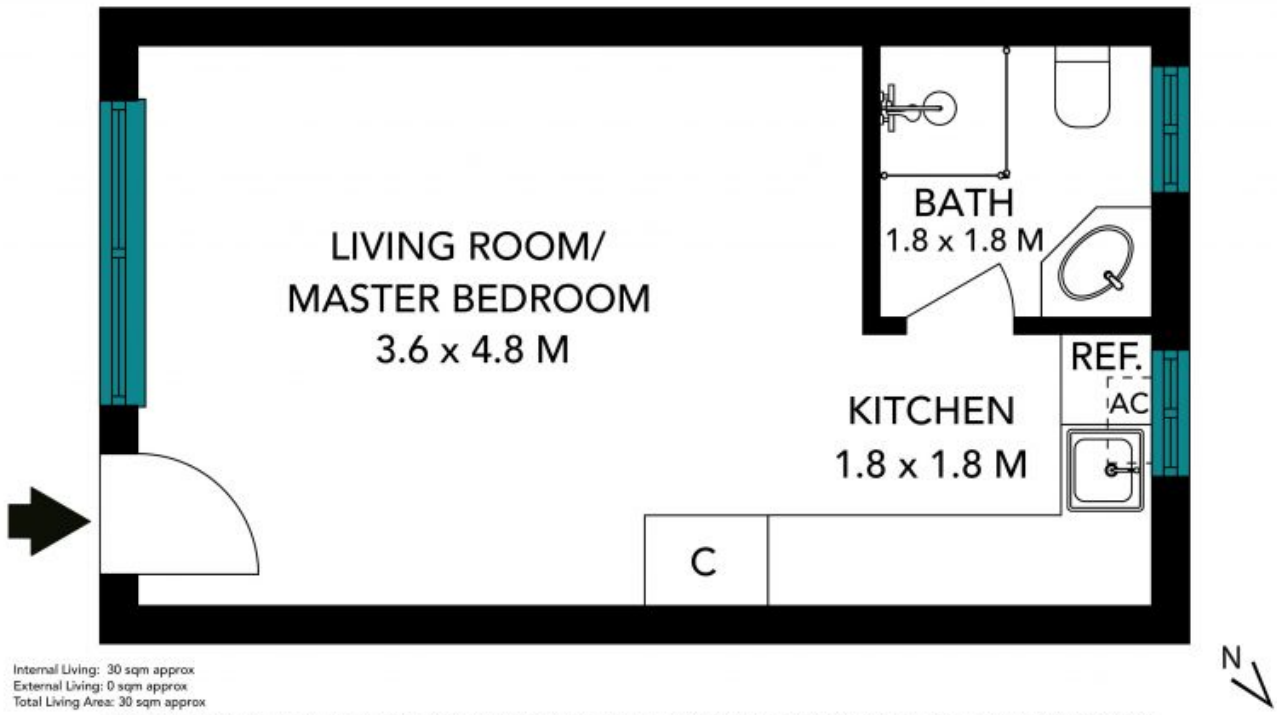
Price:

Expressions Of Interest



**Brendan Andrews**

0417 788 882

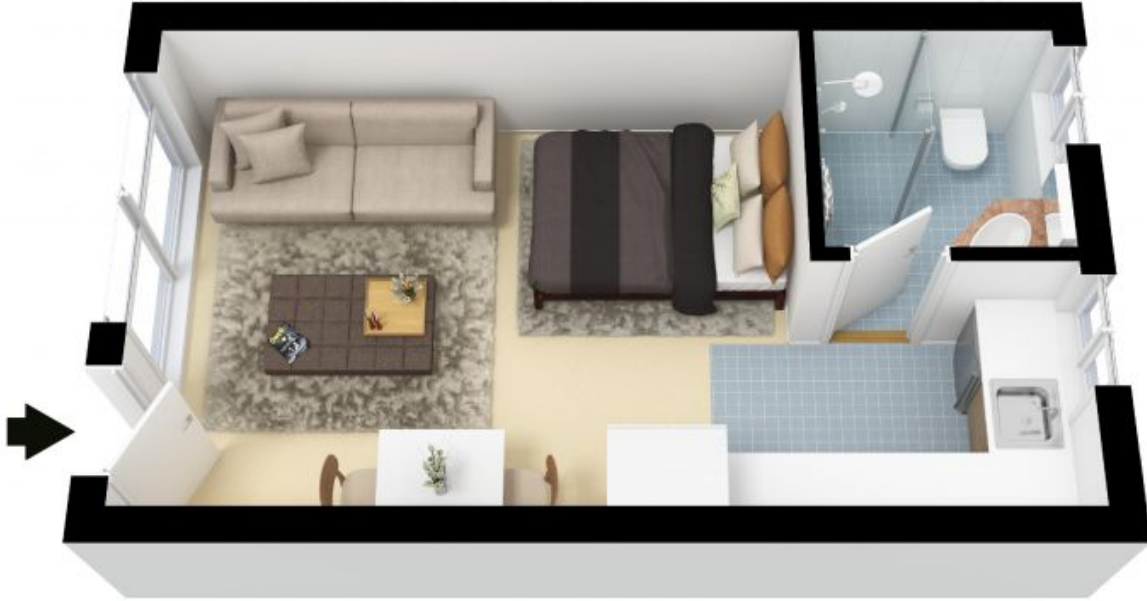


Internal Living: 30 sqm approx  
External Living: 0 sqm approx  
Total Living Area: 30 sqm approx

The floor plan is not to scale; measurements are indicative and in metres. Exterior elements are not in position. Plans should not be relied on. Interested parties should make and rely on their own enquiries. All other information provided has been collected from reliable sources but cannot be guaranteed for accuracy.

12/1444 Gold Coast Highway, Palm Beach





Internal Living: 30 sqm approx  
External Living: 0 sqm approx  
Total Living Area: 30 sqm approx

The floor plan is not to scale, measurements are indicative and in metres. All features included in this 3D plan are for inspiration purposes only. This is not an exact replica of the property or the position of exterior elements. Plans should not be relied on. Interested parties should make and rely on their own enquiries.



12/1444 Gold Coast Highway, Palm Beach

