



1/60 Jefferson Lane Palm Beach, QLD



Prestigious haven at irresistible beachside locale

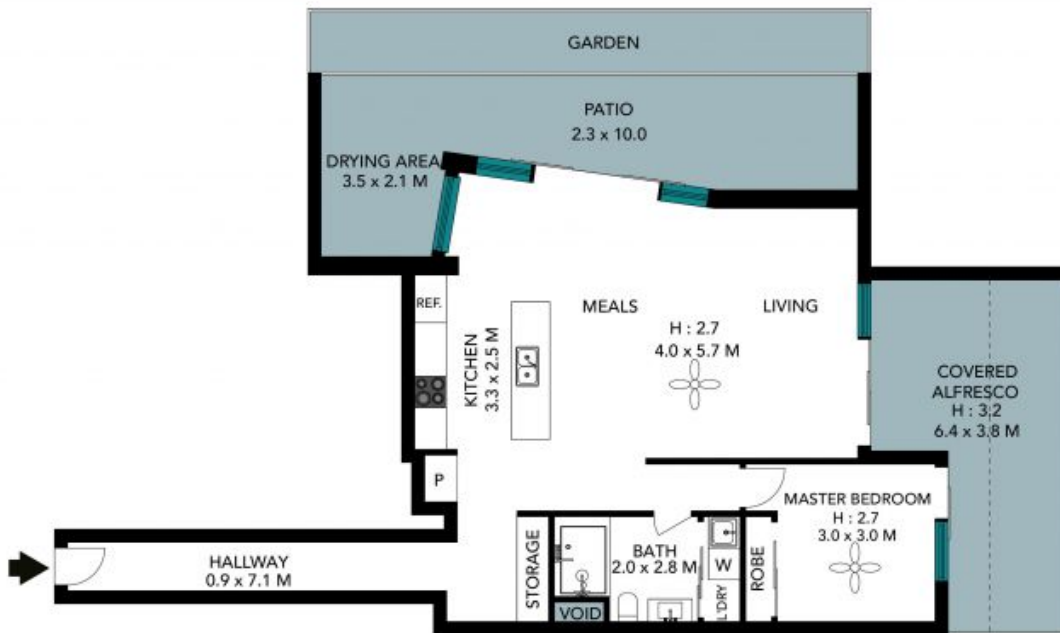
Price: \$600,000

Click on the REQUEST AN INSPECTION button to book into the next open home.



Brendan Andrews

0417 788 882



Internal Living: 77 sqm approx
 External Living: 57 sqm approx
 Total Living Area: 134 sqm approx

The floor plan is not to scale; measurements are indicative and in metres. Exterior elements are not in position. Plans should not be relied on. Interested parties should make and rely on their own enquiries. All other information provided has been collected from reliable sources but cannot be guaranteed for accuracy.

1/60 Jefferson Lane, Palm Beach





Internal Living: 77 sqm approx
External Living: 57 sqm approx
Total Living Area: 134 sqm approx

The floor plan is not to scale, measurements are indicative and in metres. All features included in this 3D plan are for inspiration purposes only. This is not an exact replica of the property or the position of exterior elements. Plans should not be relied on. Interested parties should make and rely on their own enquiries.



1/60 Jefferson Lane, Palm Beach

