

2/3 Fleay Court Burleigh Heads, QLD

3 

2 

3 

Beautifully presented townhouse in sought after tranquil setting

Price: \$765,000

Click on the REQUEST AN INSPECTION button to book into the next open home.



Rebecca Leo

0419 880 822



GROUND FLOOR

Internal Living: 163 sqm approx
External Living: 42 sqm approx
Total Living Area: 205 sqm approx



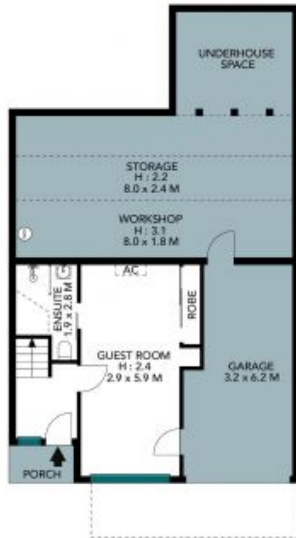
1ST FLOOR



The floor plan is not to scale, measurements are indicative and in metres. All features included in this 3D plan are for inspiration purposes only. This is not an exact replica of the property or the position of exterior elements. Plans should not be relied on. Interested parties should make and rely on their own enquiries.

2/3 Fleay Court, Burleigh Heads





Internal Living: 163 sqm approx
 External Living: 42 sqm approx
 Total Living Area: 205 sqm approx

The site plan and floor plan are not to scale; measurements are indicative and in metres. Rooms and areas are placed for illustrative purposes. Plans should not be relied on. Interested parties should make and rely on their own enquiries. All other information provided has been collected from reliable sources but cannot be guaranteed for accuracy.



2/3 Fleay Court, Burleigh Heads

