



42/15 Simpsons Road Elanora, QLD

3 2 1

Well presented townhouse in sought-after address

Enveloped by lush gardens and set within a peaceful complex, this three bedroom townhouse is low maintenance and ideal for first home buyers, investors or downsizers. It's located just minutes to The Pines Shopping Centre, local schools and our beautiful Gold Coast beaches.

Price: \$395,000

Stone Real Estate -
Head Office



FIRST FLOOR



GROUND FLOOR

Internal Living: 146 sqm approx
External Living: 32 sqm approx
Total Living Area: 178 sqm approx

The floor plan is not to scale, measurements are indicative and in metres. All features included in this 3D plan are for inspiration purposes only. This is not an exact replica of the property or the position of exterior elements. Plans should not be relied on. Interested parties should make and rely on their own enquiries.

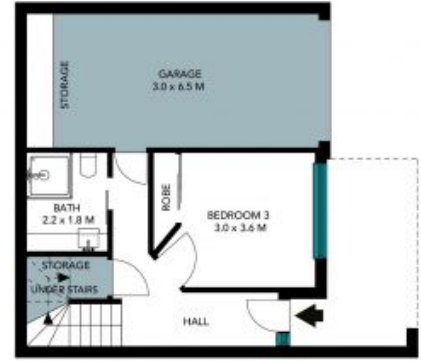


42/15 Simpsons Road, Elanora





FIRST FLOOR



GROUND FLOOR

Internal Living: 146 sqm approx
 External Living: 32 sqm approx
 Total Living Area: 178 sqm approx

The floor plan is not to scale; measurements are indicative and in metres. Exterior elements are not in position. Plans should not be relied on. Interested parties should make and rely on their own enquiries. All other information provided has been collected from reliable sources but cannot be guaranteed for accuracy.



42/15 Simpsons Road, Elanora

