



6/14 Boundary Street Tweed Heads, NSW

3

2

2

Chic renovated apartment adjoining Rainbow Bay

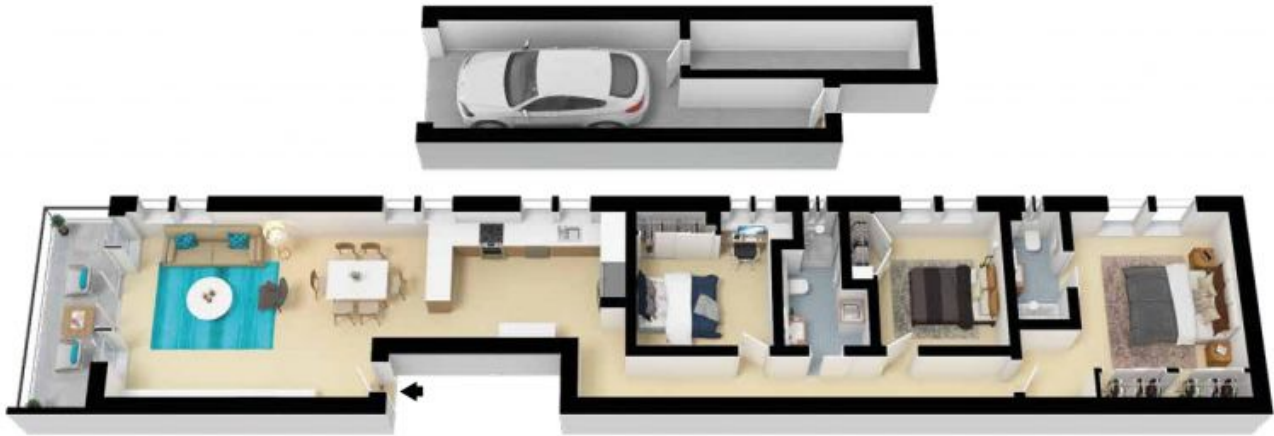
Beautifully renovated, this top floor north facing three bedroom apartment features stunning views of Rainbow Bay. The highly sought after exclusive address is on the border of Rainbow Bay and Tweed Heads, only a five minute walk to Rainbow Bay beach and Snapper Rocks, Tweed River, Twin Towns, Jack Evans Boat Harbour, popular shops and eateries.

Price: \$800,000



Brendan Andrews

0417 788 882



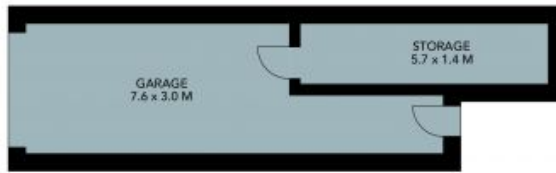
Internal Living: 142 sqm approx
External Living: 10 sqm approx
Total Living Area: 152 sqm approx

The floor plan is not to scale; measurements are indicative and in metres. All features included in this 3D plan are for inspiration purposes only. This is not an exact replica of the property or the position of exterior elements. Plans should not be relied on. Interested parties should make and rely on their own enquiries.

6/14 Boundary Street, Tweed Heads



STONE



(NOT IN POSITION)



Internal Living: 142 sqm approx
 External Living: 10 sqm approx
 Total Living Area: 152 sqm approx

The floor plan is not to scale, measurements are indicative and in metres. Exterior elements are not in position. Plans should not be relied on. Interested parties should make and rely on their own enquiries. All other information provided has been collected from reliable sources but cannot be guaranteed for accuracy.

6/14 Boundary Street, Tweed Heads



STONE