

17E/5 Clifford Street Surfers Paradise, QLD

2

2

1

### Centrally located apartment with ocean and hinterland views

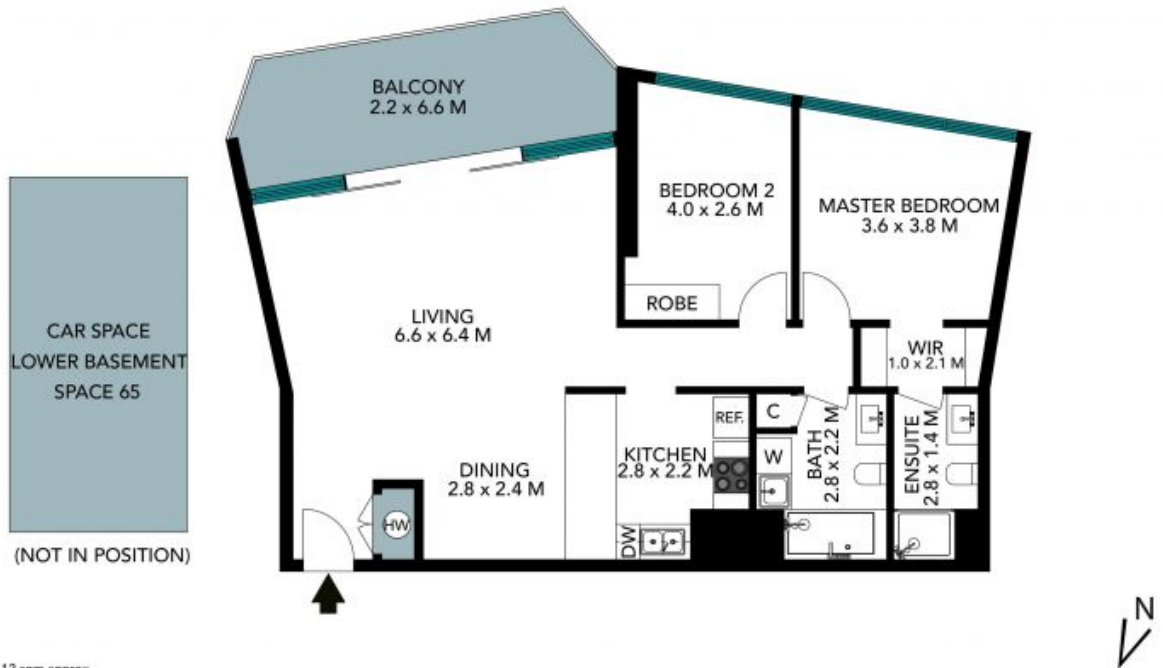
Located on the 17th floor in 'Peninsula', this South facing 112sqm (approx) apartment plus car space has breathtaking ocean and hinterland views and offers incredible value to its next owner. This well maintained apartment is centrally located, only moments away from the Gold Coast's most famous beaches, major shopping centres, local restaurants and entertaining precincts.

Price: \$492,500



**Brendan Andrews**

0417 788 882



Total Living Area: 112 sqm approx

The floor plan is not to scale, measurements are indicative and in metres. Exterior elements are not in position. Plans should not be relied on. Interested parties should make and rely on their own enquiries. All other information provided has been collected from reliable sources but cannot be guaranteed for accuracy.

17E/5 Clifford Street, Surfers Paradise

STONE



Total Living Area: 112 sqm approx

The floor plan is not to scale, measurements are indicative and in metres. All features included in this 3D plan are for inspiration purposes only. This is not an exact replica of the property or the position of exterior elements. Plans should not be relied on. Interested parties should make and rely on their own enquiries.



17E/5 Clifford Street, Surfers Paradise

