



7 Turton Avenue Clemton Park, NSW

3

2

2

Position Plus Potential

A well-kept family home for almost 50 years. This perfectly located residence is set in a tree-lined street and is brimming with potential. Located within walking distance to local schools, parks, cafes and Clemton Park shopping village, it offers a versatile floorplan and an exciting opportunity to extend and add further value.

Price:

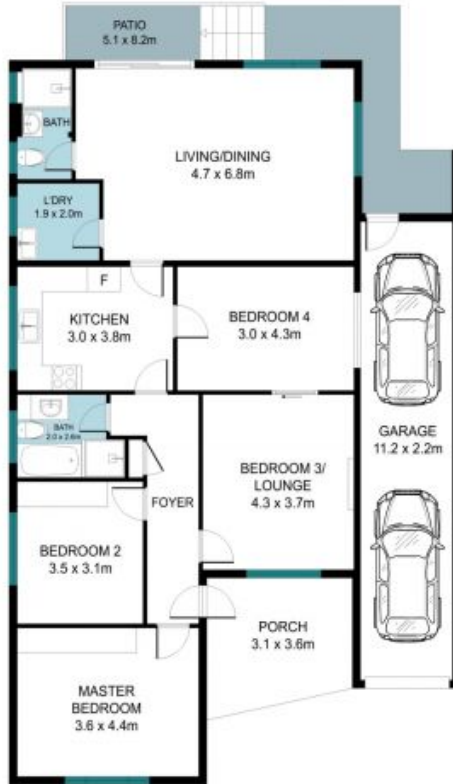
Sold Off Market



George Karafotias

0405 436 336

7 Turton Avenue,
Clemton Park



The site plan and floor plan are not to scale; measurements are indicative and in metres. Bushes and trees are placed for illustration purposes. Plans should not be relied on. Interested parties should make and rely on their own enquiries. All other information provided has been collected from reliable sources but cannot be guaranteed for accuracy.