



26/90 The Entrance Road Erina, NSW

Industrial unit in new development

Spacious unit with high clearance roller door located in the brand new Sawmill development in Erina. The complex has mixed use industrial and commercial businesses and offers a great opportunity for a small business to upgrade or get started!

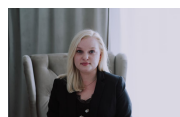
- Automatic roller door with remote
- Room for installation of mezzanine floor
- Electricity and water available
- Approx 35sqm of internal floor space
- Approx 4m wide x 8m in length
- Two allocated parking spaces at the front of the factory
- Positioned on the corner of Avoca Dr and The Entrance Road

Council Rates: \$0.00
Water Rates: \$0.00
Strata Rates: \$0.00



Christel Renton

0417 208 314



Magdalena Kowalska

0499 229 748