

4/1A Greycliffe Street Queenscliff, NSW

3

1

Absolute beachfront with show stopping, intimate views

Perched above Queenscliff Beach and with mesmerising uninterrupted views across famous Manly Beach and up to North Head, this incredible apartment is one of only a handful of residential properties boasting direct beachfront access from the door. Inside, bright contemporary interiors feature large windows framing picture-perfect beach and ocean views while a generous covered balcony has you literally hovering above the beach. And, if you can tear yourself away from the view, a level stroll along the boardwalk takes you right into Manly for nightlife, restaurants and cafes, boutique shopping and city ferries.

- Tightly-held boutique block of just nine company title apartments
- Shared external laundry/storeroom and common garden area with outdoor shower
- Master bedroom with beach views, direct balcony access, ceilings fans plus built-in robes and desk
- Second bedroom with built-in bunks and room for desk, built-in robes
- Cook's kitchen with stainless steel benchtops, Ilve oven with gas cooktop and dishwasher
- Wide timber floorboards throughout

Price:

Guide \$2,800,000



Maria Cassarino

0411 818 093



Todd Baker

0407 795 090

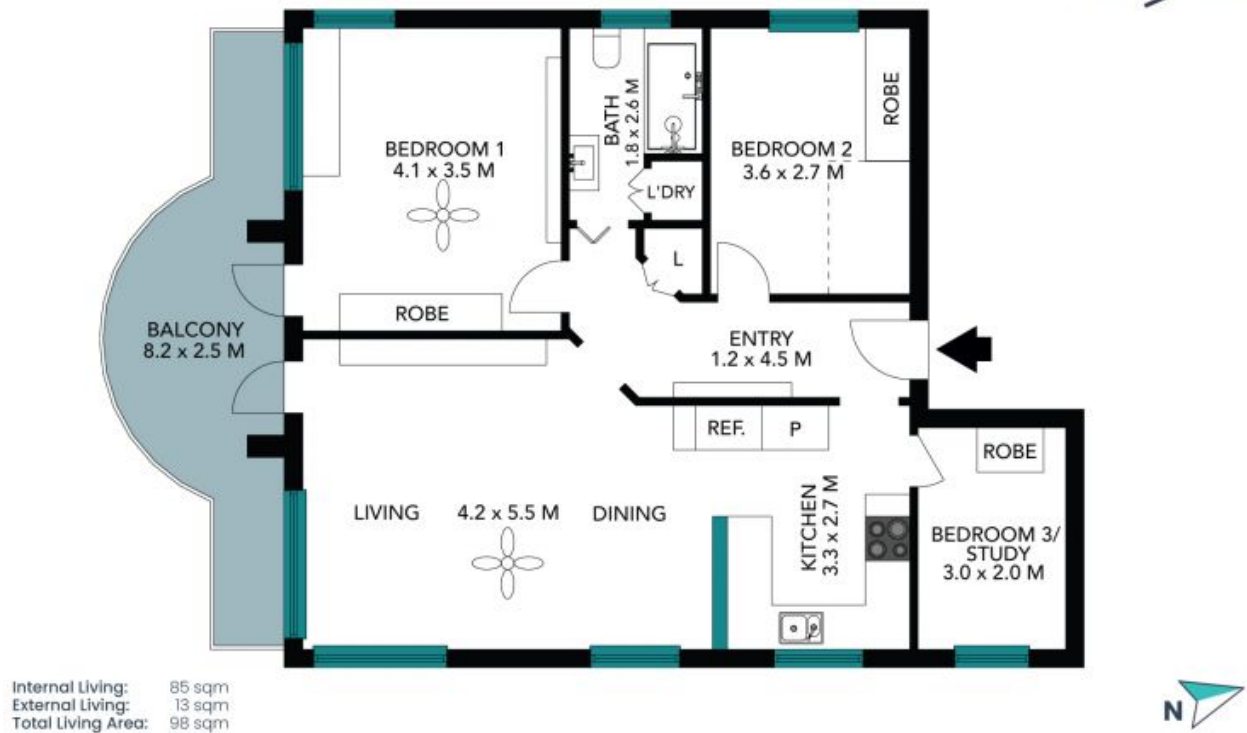
4/1A Greycliffe St
Queenscliff



Internal Living: 85 sqm
External Living: 13 sqm
Total Living Area: 98 sqm



The floor plan is not to scale; measurements are indicative and in metres. All features included in this 3D plan are for inspiration purposes only.
This is not an exact replica of the property or the position of exterior elements. Plans should not be relied on. Interested parties should make and rely on their own enquiries.



The floor plan is not to scale, measurements are indicative and in metres. Exterior elements are not in position. Plans should not be relied on. Interested parties should make and rely on their own enquiries. All other information provided has been collected from reliable sources but cannot be guaranteed for accuracy.