



34 Bedford Street Willoughby, NSW

2 2 1

SOLD BY STONE GREENWICH

Outstanding Opportunity In Sought After Enclave

Circa 1920's weatherboard cottage retains many of its original character and features, and has been tightly held for the last 27 years.

Well presented on a level 423sqm parcel, 'Rahamin' offers the perfect opportunity to live in now and renovate later (STCA) as desired. Just 280m to High Street Market and St.Thomas primary school.

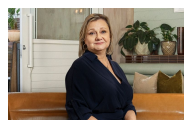
- Shiplap walls, extended original weatherboard cottage
- Seperate lounge and dining rooms with high 3m ceilings
- Living room with timber floors opens to covered to large timber deck
- Spacious timber kitchen with gas cooking leads to laundry
- Two spacious bedrooms with wool carpet, traditional sash windows and built-in robes
- Modern bathroom Plus 2nd bathroom in studio
- Level landscaped gardens with fruit trees and storage shed

Price: \$3,050,000



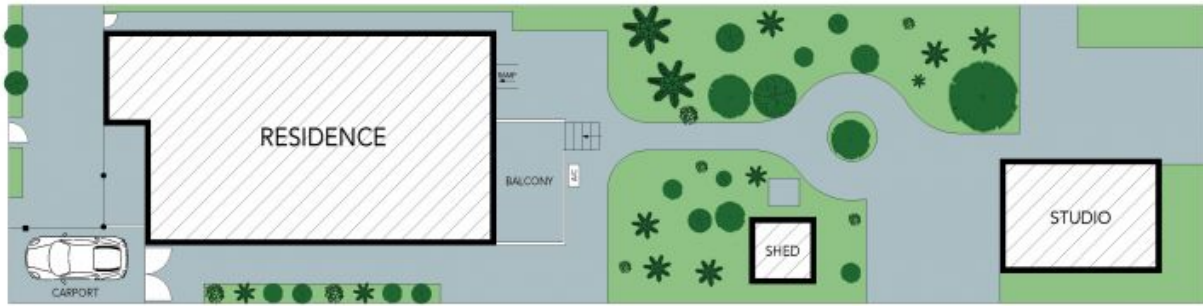
Chris Keane

0497 102 114



Diane Shipley

0413 137 874



The site plan and floor plan are not to scale; measurements are indicative and in metres. Bushes and trees are placed for illustration purposes. Plans should not be relied on. Interested parties should make and rely on their own enquiries. All other information provided has been collected from reliable sources but cannot be guaranteed for accuracy.