



48/17 Raglan Street MOSMAN, NSW

3

2

1

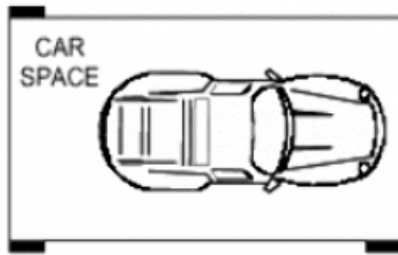
Waterfront Security Apartment - Life on Top of the World

Enjoy the most marvellous ever changing harbour panorama from this stunning top floor apartment. Offering 270° panoramic harbour views over Mosman Bay, Clark Island and Sirius Cove this well presented property offers further scope to capitalise on this wonderful address.

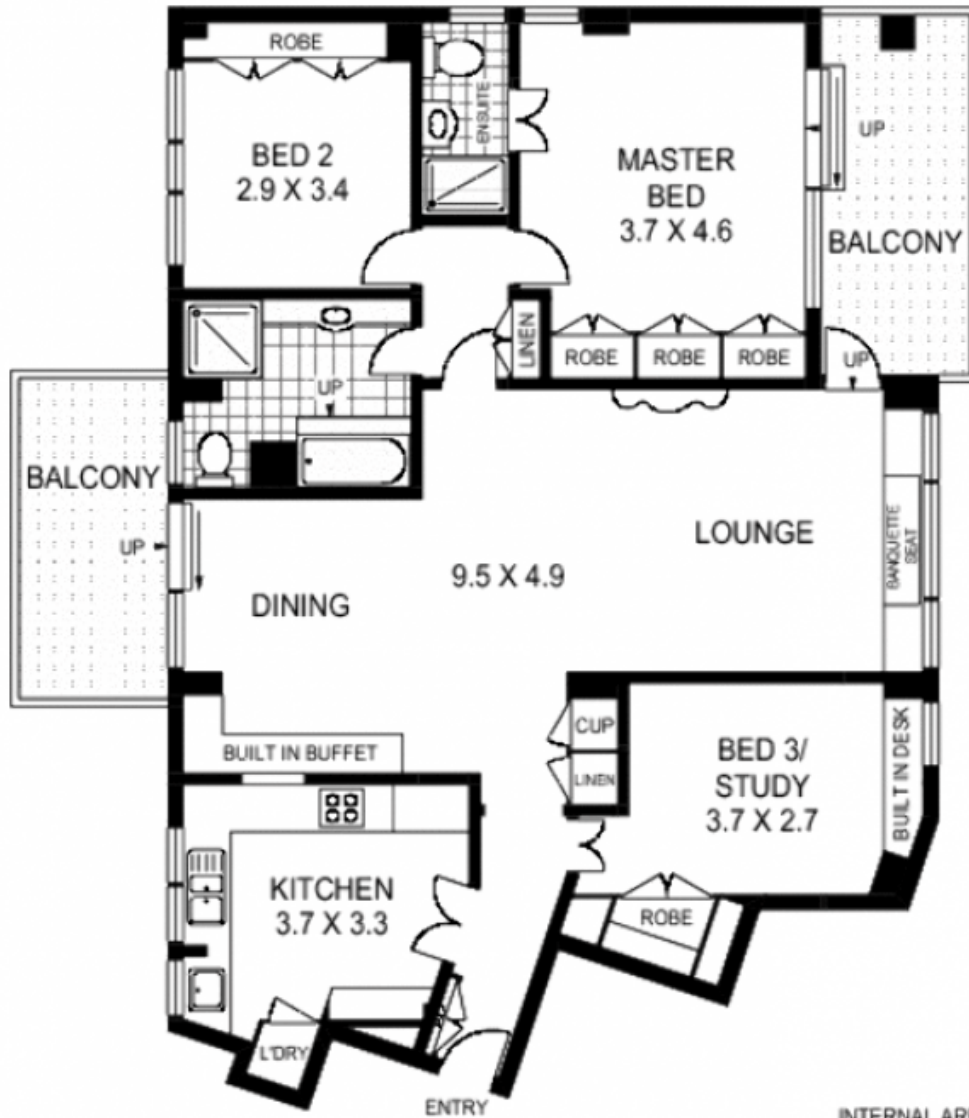


Ivan Resnekov

0411 500 240



NOTE : ONE CAR SPACE ON SECURITY PARKING AVAILABLE



INTERNAL AREA :- 109 SQM
 EXTERNAL AREA :- 32 SQM
 TOTAL AREA :- 141 SQM



48/17 RAGLAN STREET

MOSMAN

Floor Plan Disclaimer: Mind the Gap (mtg) floor plans / site plans are intended as a guide only. No representations or warranties of any nature whatsoever are given or intended and any person using this information should always rely on their own enquiries. mtg property marketing services - 1300 133 145 - photography, floor plans, virtual tours, video tours, copywriting, project marketing - www.mindthegap.com.au