

11 Pearl Bay Avenue MOSMAN, NSW



THE JEWEL IN THE BAY

A waterfront reserve property overlooking Pearl Bay Reserve and the glistening waterways of Middle Harbour and Spit, this contemporary masterbuilt family residence affords extensive formal and informal living areas and all the comforts of an executive fitout. The ideal northerly orientation ensures maximum natural light and a comfortable climate. Level access to all main areas from street level and lower self-contained accommodation & billiards room create a truly versatile home with a blue-ribbon pedigree.

4 bedrooms, master with ensuite and study

Formal lounge and dining opening to wide terracotta paved terrace with tinted glass awning and glass/stainless balustrades

Family room with Jetmaster fireplace

Timber kitchen with Kleenmaid induction cooktop and stainless rangehood + dishwasher

3.5 bathrooms

Lower storey self-contained billiards room, bar, bedroom and bathroom

Marble entry foyer

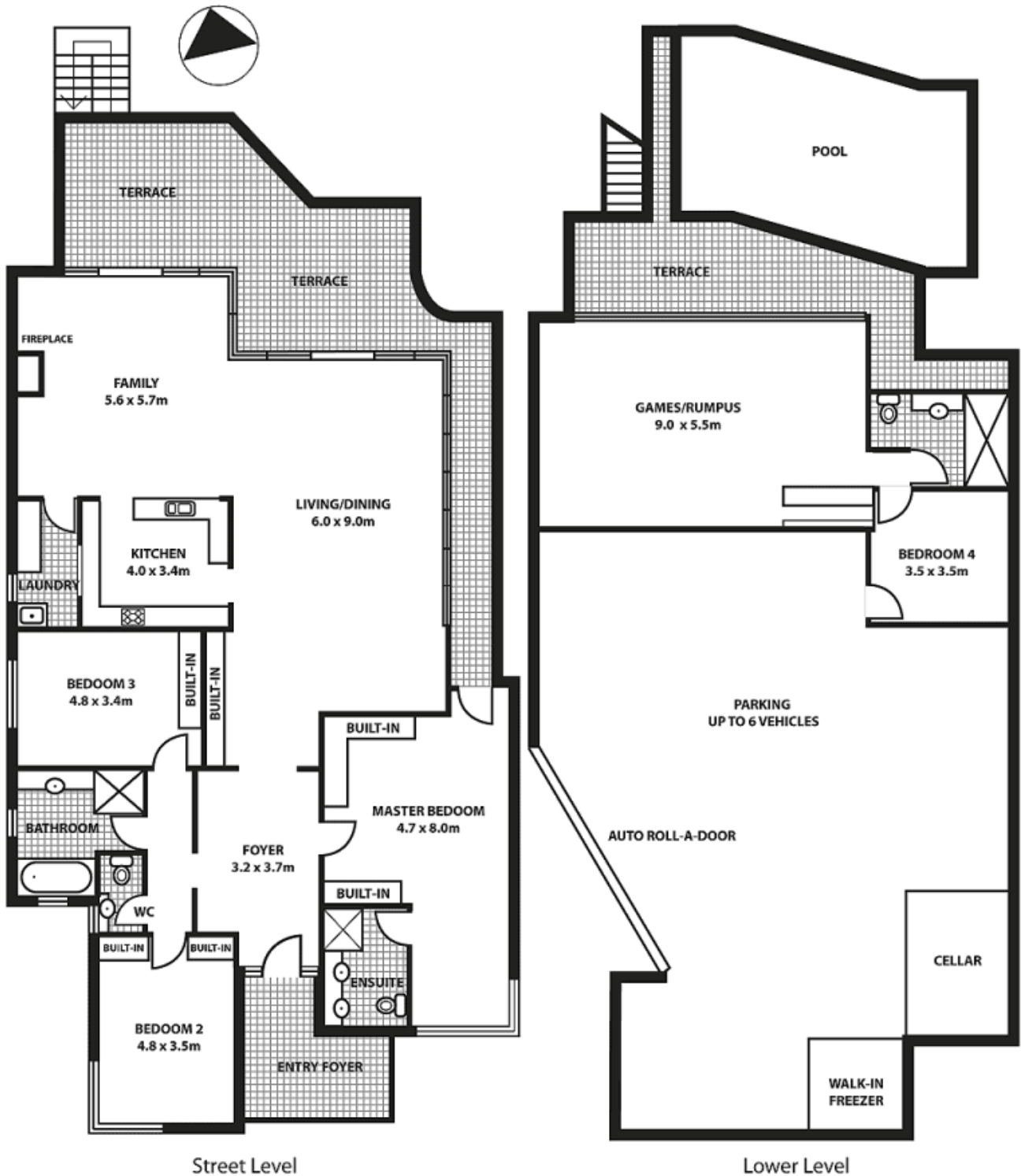
Solid brick construction

Stone Real Estate -

Head Office

11 Pearl Bay Avenue Mosman

VIEWS TO MIDDLE HARBOUR AND SPIT



Street Level

Lower Level

PEARL BAY AVENUE

Plans shown are for presentation purposes only and are not part of any legal document or title and should not be used as sole reference.

Interested parties should make their own enquiries using other sources. Measurements are approximates.

© 2008 Century 21 Real Estate Mosman