



69 Bay Street MOSMAN, NSW



### Magnificent Panoramic Views

With picture postcard views over Middle Harbour this property offers a generous sized block with dual street frontage and level access from Central Avenue.

Price: \$2,500,000

Stone Real Estate -

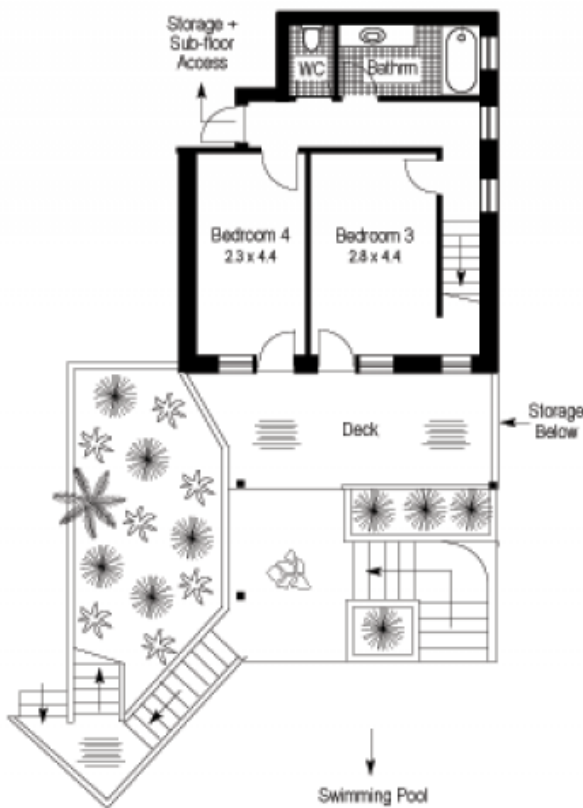
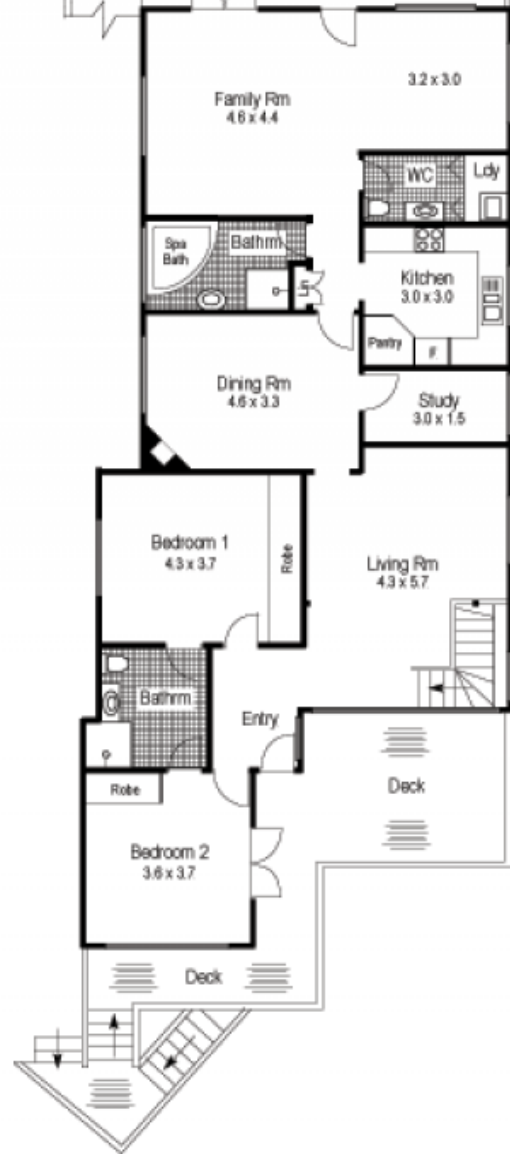
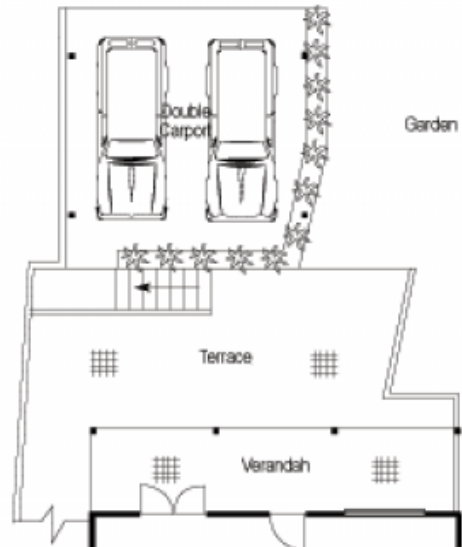
Head Office

# 69 BAY STREET, MOSMAN



Ground Floor Area = 130m<sup>2</sup> approx.  
 Lower Ground Floor Area = 40m<sup>2</sup> approx.  
 Deck + Verandah Areas = 55m<sup>2</sup> approx.  
**Total Area = 225m<sup>2</sup> approx.**

The above information has been furnished to us by the vendor. We have not verified whether or not the information is accurate and do not have any belief one way or the other as to its accuracy. We do not accept any responsibility or liability to any person for its accuracy and do no more than pass it on. All interested parties and their advisors should make and rely upon their own enquiries in order to determine whether or not the information is in fact accurate.



**LOWER GROUND FLOOR PLAN**

**GROUND FLOOR PLAN**