



18/2 Lang Street MOSMAN, NSW 2 2 1

Private Terrace Style Apartment

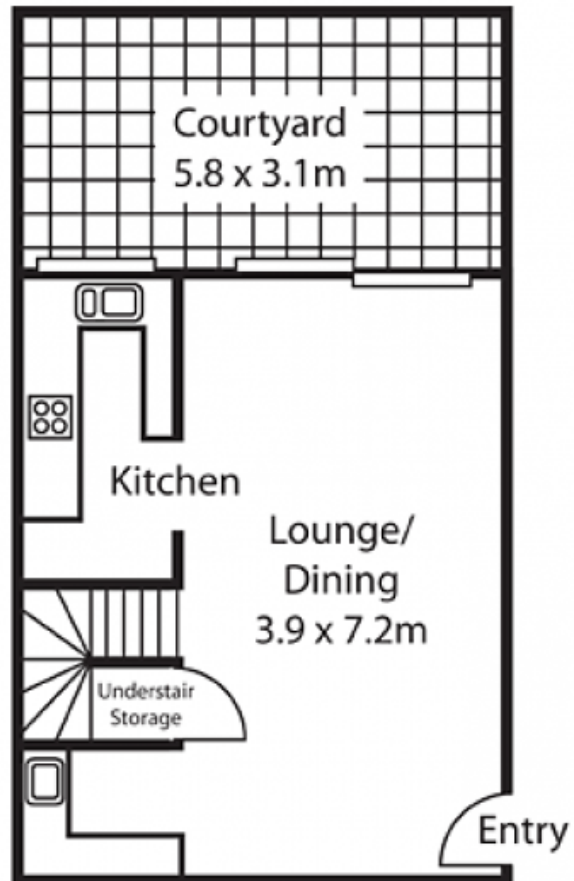
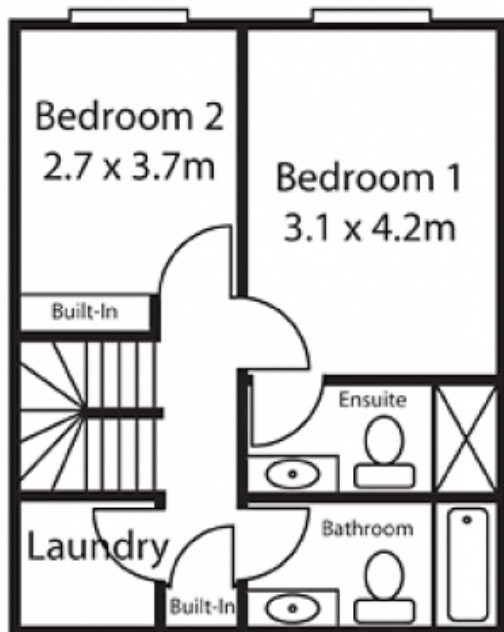
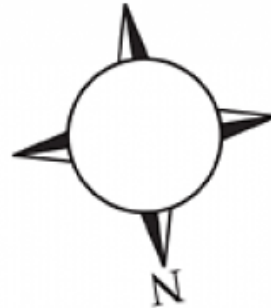
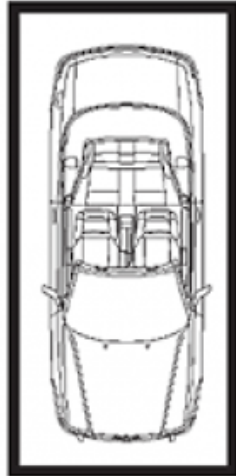
Price: \$560,000

Enjoy the privacy and outdoor living of a terrace house. Over 100 square metres of versatile internal living area, on two levels flowing to a private landscaped courtyard.

**Stone Real Estate -
Head Office**

18/2 Lang Street Mosman

Security garage
parking
2.6 x 5.5m



TOTAL INTERNAL AREA:
115sqm approx.
(including courtyard & garage)