

LOCATION SHOT

14 Milson Road CREMORNE POINT, NSW

5

1

4

Original Harbour Foreshore Federation Mansion

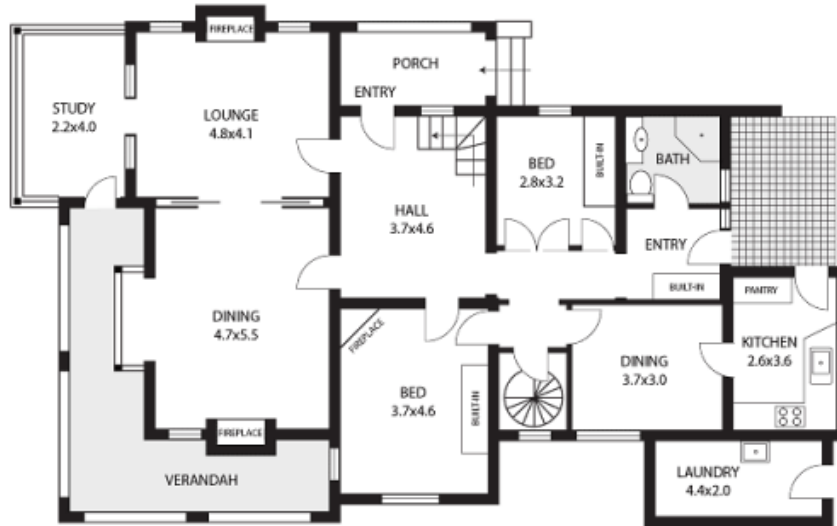
Boasting coveted waterfront reserve frontage and with dazzling main harbour and CBD views, Hermanalda is an unrenovated turn-of-the-century residence boasting a huge 544 sqm floorplan resplendent with many charming original Federation features including open fireplaces, ornate ceilings and leadlight windows.

Price:

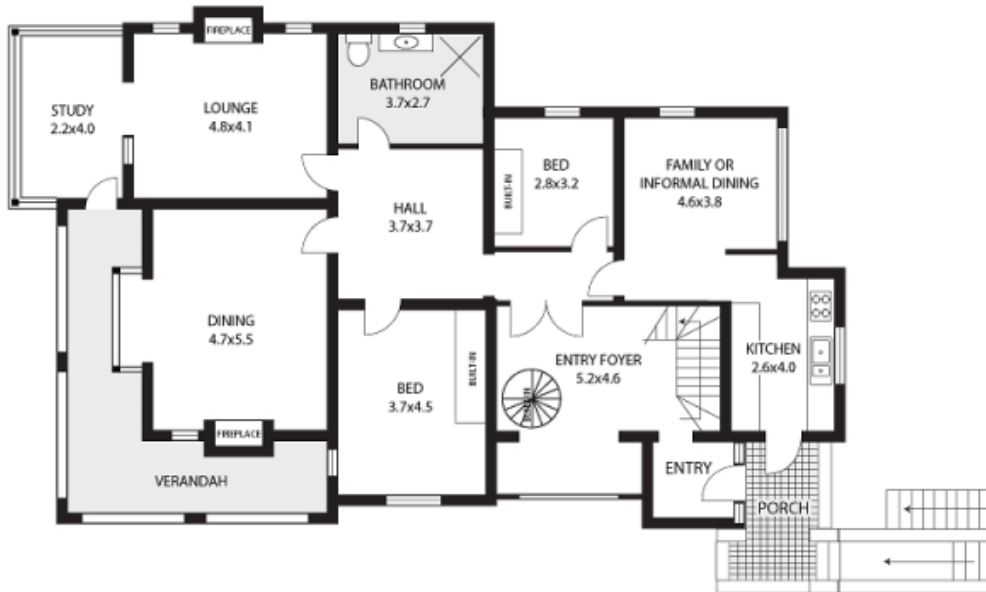
AUCTION

Stone Real Estate -
Head Office

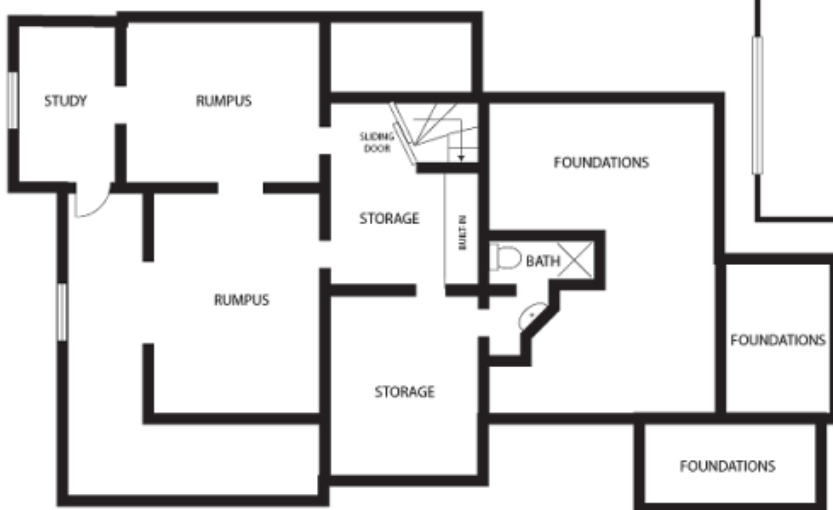
GROUND FLOOR



FIRST FLOOR



BASEMENT



ATTIC

14 Milson Road Cremorne Point



Plans are for presentation purposes only and are not part of any legal document or title and should not be used as a sole reference. Interested parties should make their own enquiries using other sources. Measurements are approximates. ©2011 Century 21 Resnekov Realty. We do not guarantee or give any warranty as to the accuracy provided. Interested parties must rely on their own inquiries.