



52/22 MOSMAN Street MOSMAN, NSW



AFFORDABLE 1 BEDDER WITH HARBOUR VIEWS & SECURE PARKING

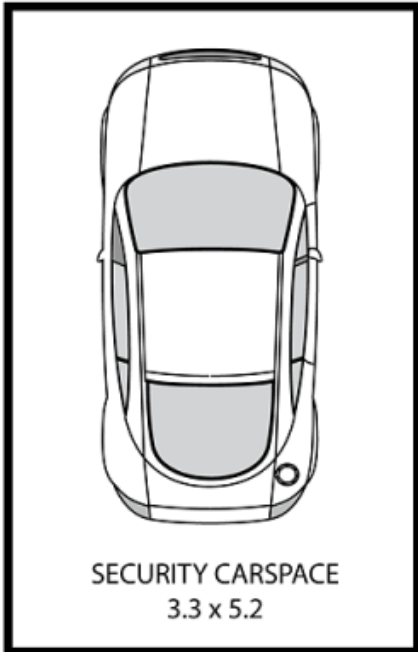
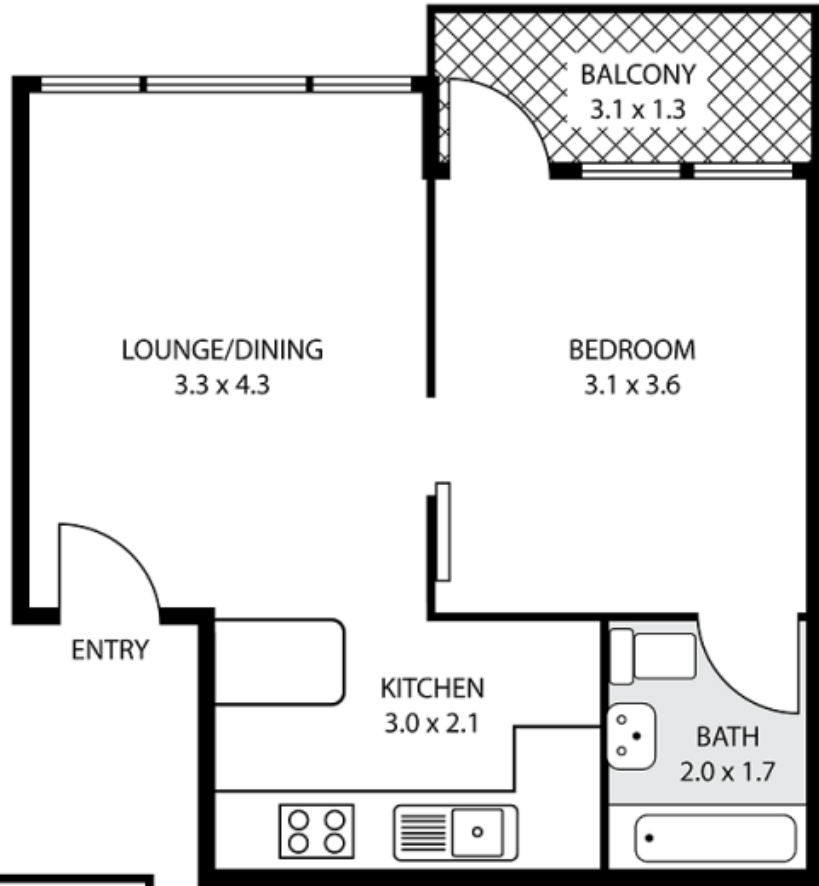
Mosman Bay and the Harbour Bridge take centre stage in this one bedroom apartments sweeping elevated views. Featuring:

- Large windows in lounge and bedroom soak the apartment in light and views
- Sizeable terrace with views sweeping from the Opera House, CBD and Harbour Bridge across Mosman Bay to the leafy vistas of Mosman to the north
- Open plan lounge and kitchen with breakfast bar and gas cooktop
- Comfortable double bedroom features an ensuite with bath
- Large security parking space
- 6th floor with lift access
- Security building with video intercom
- Walk to ferry, bus and Avenue Road shops

Price:

Offers Over \$405K

**Stone Real Estate -
Head Office**



52/22 MOSMAN STREET, MOSMAN

Scale bar metres. Dimensions are approximate



Plans are for presentation purposes only and are not part of any legal document or title and should not be used as sole reference. Interested parties should make their own enquiries using other sources. Measurements are approximate.
 ©2011 Century 21 Real Estate Mosman