



9 The Esplanade MOSMAN, NSW

3 

2 

3 

Penthouse Apartment

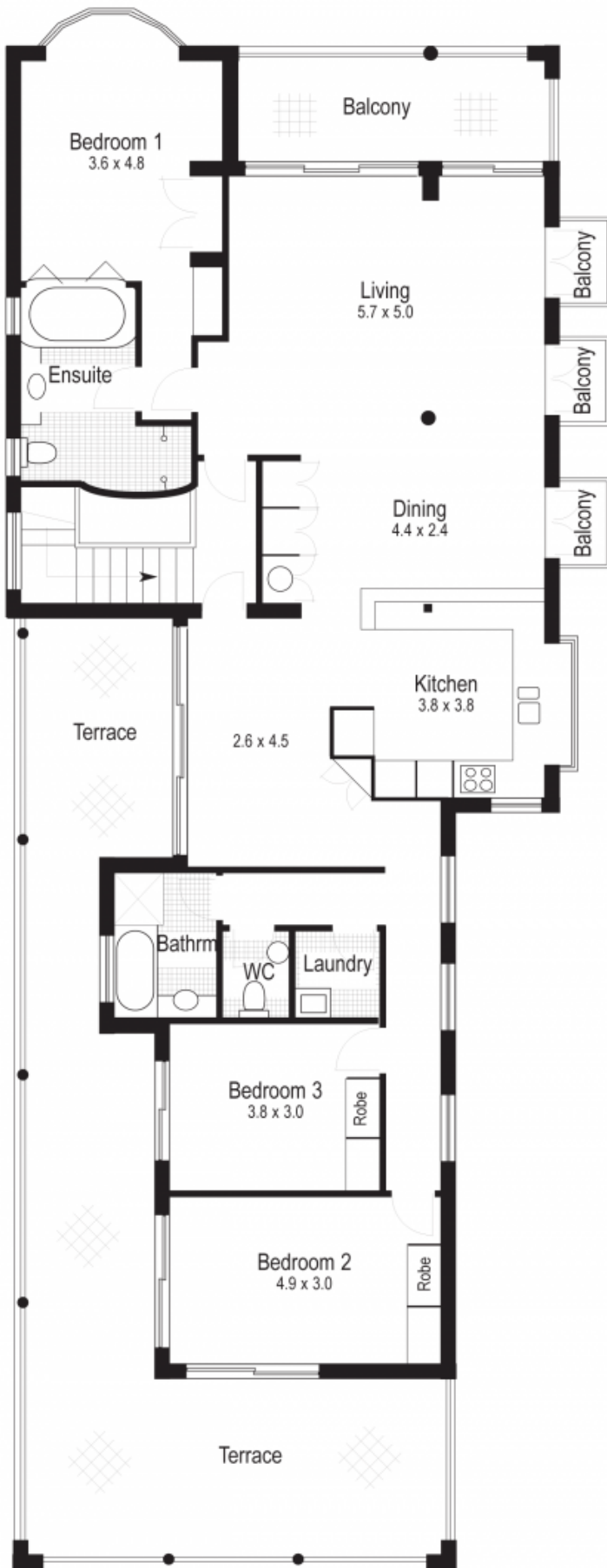
This luxuriously appointed architect-designed contemporary strata residence is situated at Sydney's premier harbour beach. With living, dining and master suite overlooking the sparkling waters of Balmoral Beach and the harbour beyond. Whisper quiet, this low maintenance home has all the convenience of apartment living. Stylish interiors are filled with natural light and flow to a choice of two balconies.

Price:

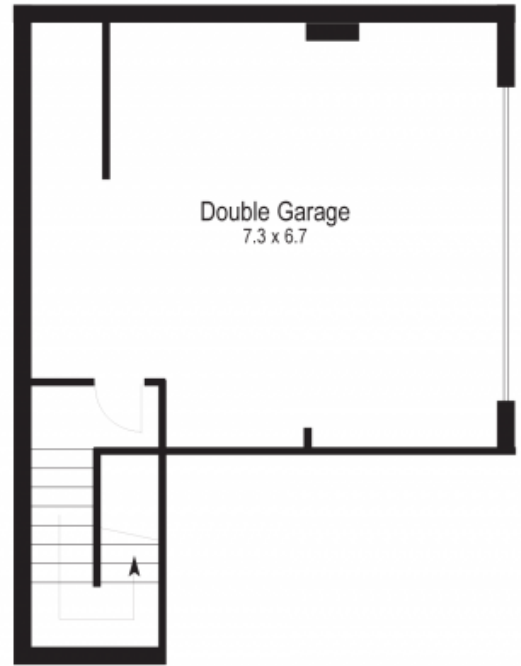
AUCTION

Stone Real Estate -

Head Office



First Floor Plan



Basement Plan

**9 THE ESPLANADE,
BALMORAL.**

Measurements are approximate only.

