

23 Boyle Street MOSMAN, NSW

3

2

1

Classic Family Home, with Loads of Potential

Timeless single-level 3 bedroom family home offering captivating harbour and district views stretching over Mosman Bay to the Eastern Suburbs. The generous floorplan offers a sitting room, formal lounge, 3 large bedrooms, master with ensuite and a north-facing informal family/ dining room overlooking the private rear garden. Beautifully presented, just minutes walk to old Cremorne ferry wharf. There is council approval to construct a second storey residence to further capitalise on the magnificent harbour views.

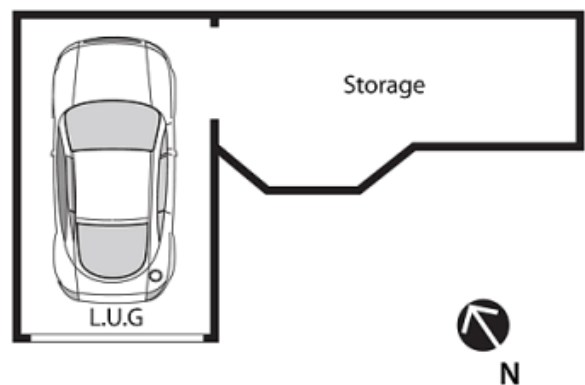
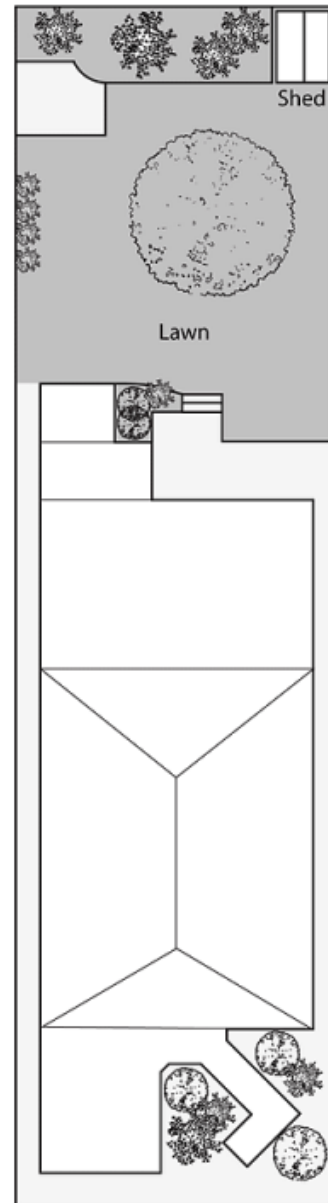
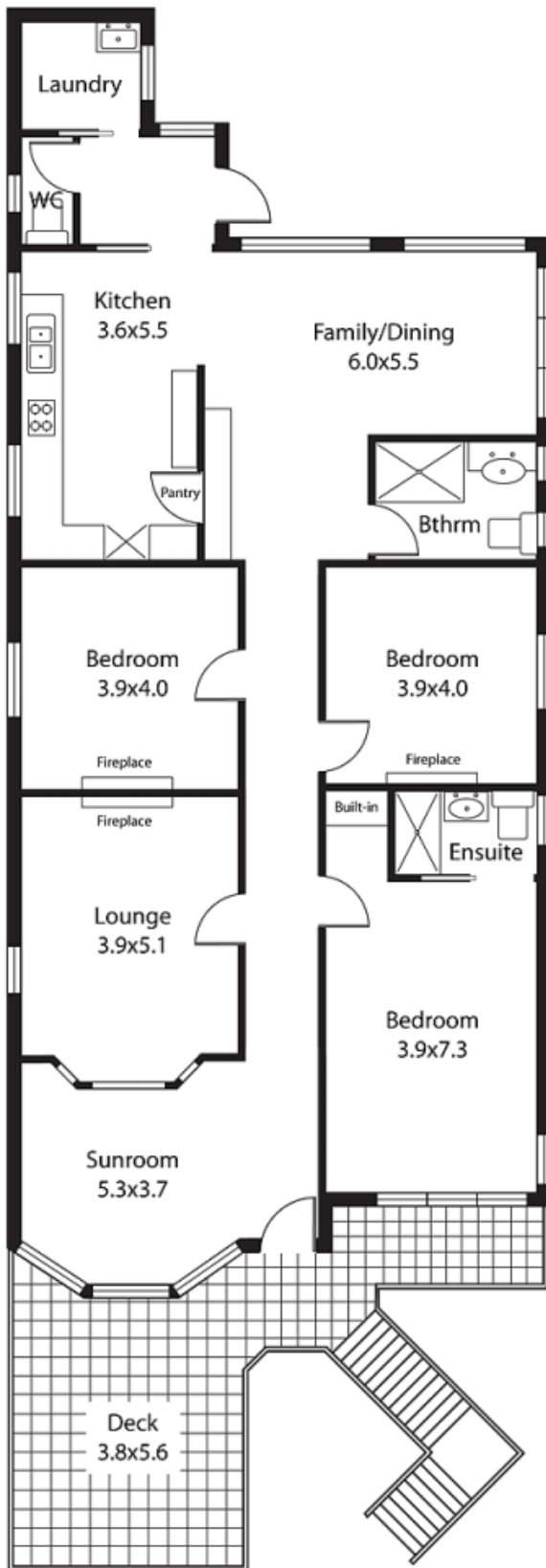
Price:

Auction



Ivan Resnekov

0411 500 240



23 Boyle Street Mosman

Plans are for presentation purposes only and are not part of any legal document or title and should not be used as a sole reference. Interested parties should make their own enquiries using other sources. Measurements are approximates. ©2012 Century 21 Resnekov Realty We do not guarantee or give any warranty as to the accuracy provided. Interested parties must rely on their own inquiries.