

1/12 Parriwi Road MOSMAN, NSW 3 1 2 2

**Luxury Apartment / Urgent Sale Best Offer Over \$1,250,000**

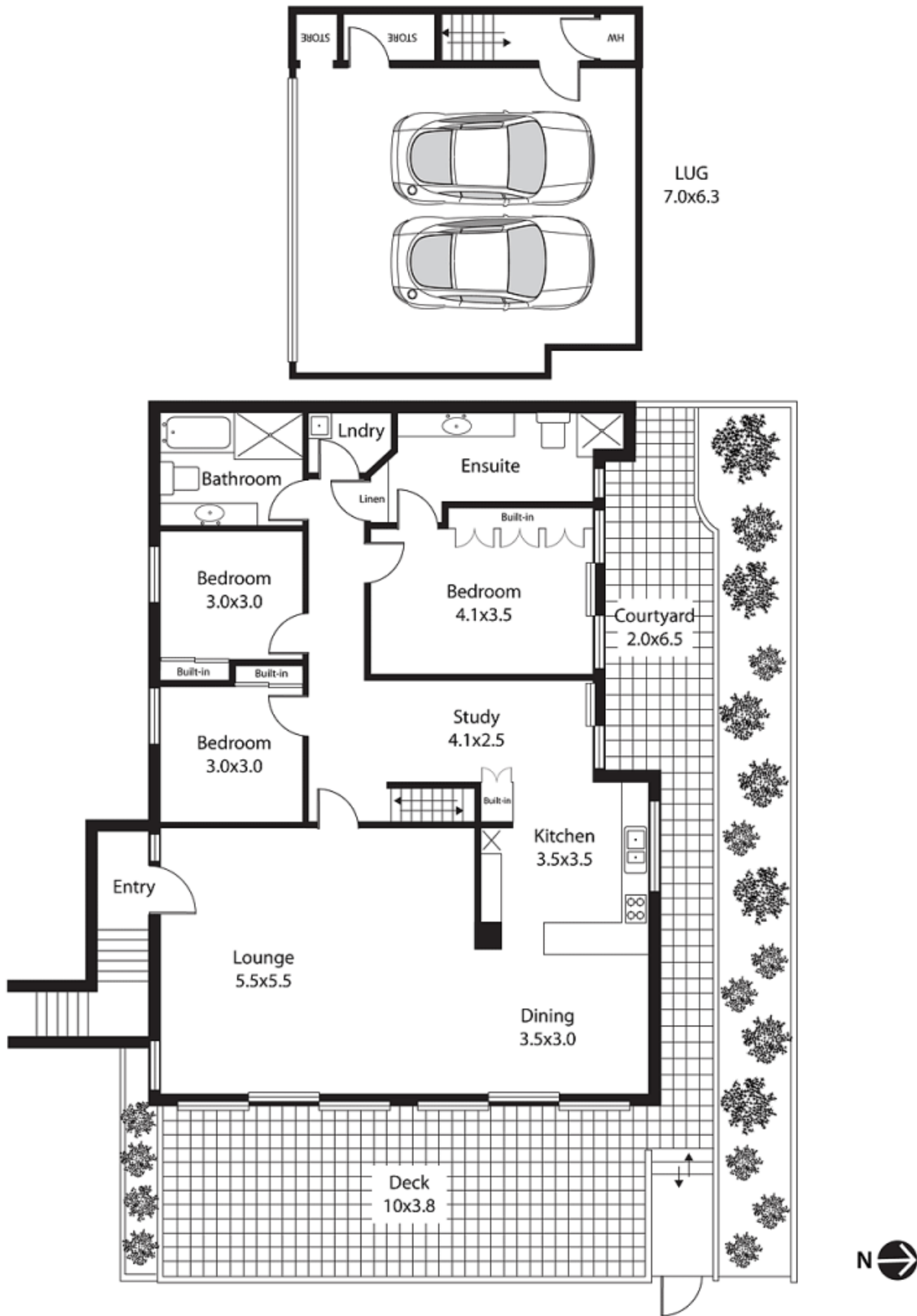
**Price:** \$1,250,000

Highlighted by the massive sundrenched deck flowing from light-filled living and dining areas, this home caters for stylish indoor/outdoor entertaining. Boasting a 245 sqm (approx) floorplan, this whole floor contemporary 3 bedroom garden apartment feels more like a townhome. Private, individual entrance and the convenience of a huge double garage with internal access and large workshop. Generous bedrooms boast built-ins and the master bedroom suite opens to a private courtyard garden connected to the front deck.



**Ivan Resnekov**

0411 500 240



## 1/12 Parrawi Road Mosman

Plans are for presentation purposes only and are not part of any legal document or title and should not be used as a sole reference. Interested parties should make their own enquiries using other sources. Measurements are approximates. ©2012 Century 21 Resnekov Realty We do not guarantee or give any warranty as to the accuracy provided. Interested parties must rely on their own inquiries.