



2/12 Punch Street MOSMAN, NSW

2 

1 

1 

**Sold in 3 days! Record price for building!**

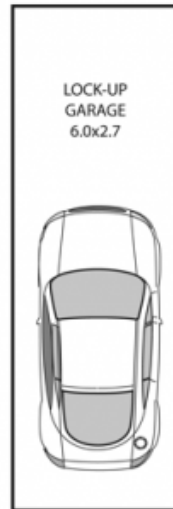
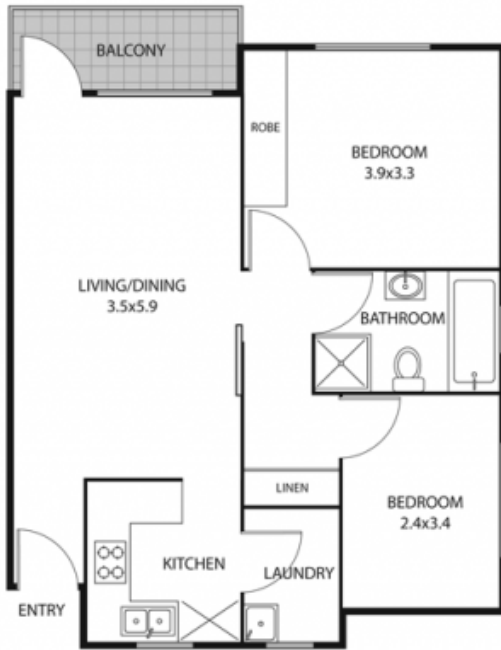
Modern Living in the Heart of Mosman

**Price:**

...guide over \$550,000

**Stone Real Estate -**

**Head Office**



Approximate outgoings per quarter
Water: \$156
Council: \$300
Strata: \$1100

Scale (Metres)



## 2/12 Punch Street Mosman

Plans are for presentation purposes only and are not part of any legal document or title and should not be used as a sole reference. Interested parties should make their own enquiries using other sources. Measurements are approximates. ©2012 Century 21 Resnekov Realty We do not guarantee or give any warranty as to the accuracy provided. Interested parties must rely on their own inquiries.

