

231 Spit Road MOSMAN, NSW

4

3

3

### Luxury Home with Sweeping Harbour Views

With a wonderful elevated positioning that enjoys sweeping panoramas across The Spit to Seaforth, this sprawling three-level home showcases light and airy open plan living, with expansive glass windows that maximise the homes spectacular vistas. Contemporary in design and with luxury finishes throughout, this superb residence offers a premium lifestyle, just moments to The Spit marina and restaurants, Parriwi Park, Chinamans Beach, private and public schools, shops and buses.

**Price:**

Offers over \$1.8 million

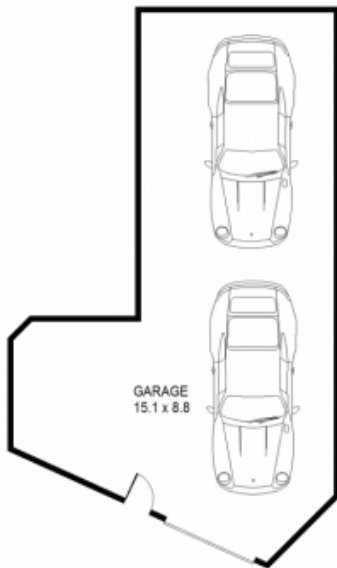
**Stone Real Estate -  
Head Office**



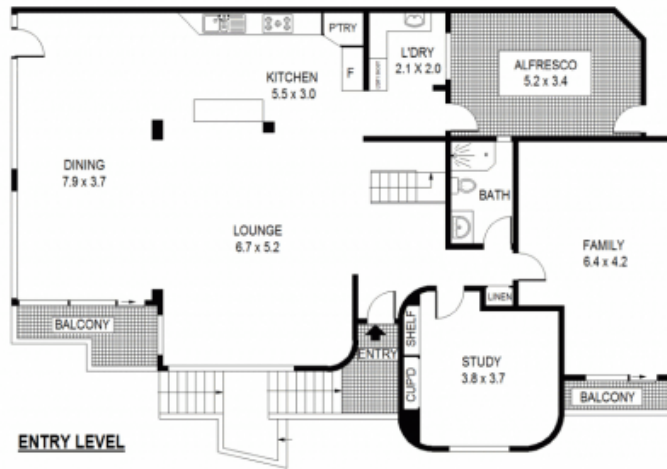
**GROUND LEVEL**



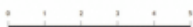
**TOP LEVEL**



**LOWER GROUND LEVEL**



**ENTRY LEVEL**



Scale shown in metres. All dimensions herein are approximate and gathered from sources believed to be reliable. Whilst every effort is made for the accuracy of our floor plans, interested parties should rely on their own enquires. Floor Plans by Industrie Media | [industriemedia.tv](http://industriemedia.tv)

S4

231 Spit Road, Mosman

